

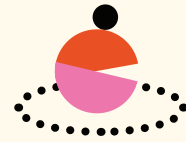


HAPPY STRUCTURES



## MORE THAN SLIDES

These are not your average playground slides. Designed by Bananaz and built by OSOM, our Playslides are bold, sculptural structures that invite climbing, crawling, socializing, and, of course, sliding. Each one is a multi-sensory experience — with play features above, below, and all around — made to spark curiosity and movement at every level. Whether in a public park or an urban square, they turn any space into a mini adventure.



### COMPACT DESIGN

Compact footprint, maximum fun, smartly designed to fit under 65 sqm. These all-in-one units deliver climbing, sliding, sensory, and social play.



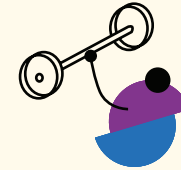
### ACTIVE PLAY

Play that builds skills such as physical strength, balance, and focus through varied climbing routes and active play challenges. Engaging top platforms at 1.5 m and 2 m heights.



### SENSORY PLAY

Multi-sensory and inclusive, featuring tactile panels, color filters, rotating windows, and rope elements. Designed to engage children of diverse abilities.



### BUILT TO LAST

Durable and customizable, made from high-quality materials to ensure long-lasting appeal and design flexibility.



### SOCIAL INTERACTION

Promotes collaboration and connection as children explore, play, and invent games together.



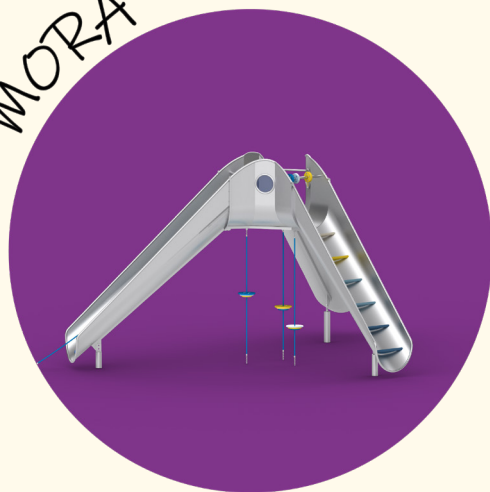
### SCULPTURAL AESTHETIC

Bold, artistic designs that double as landmarks, adding character and beauty to any space.

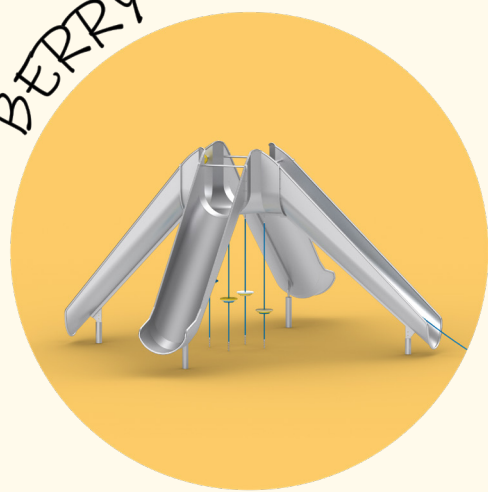
ELMA



MORA



BERRY



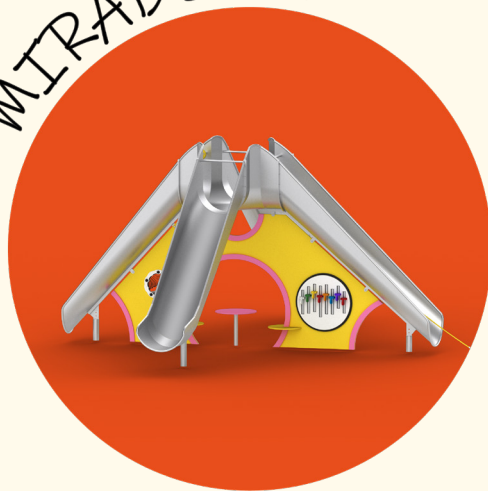
MOMO



MALINA



MIRABELLE



ELMA



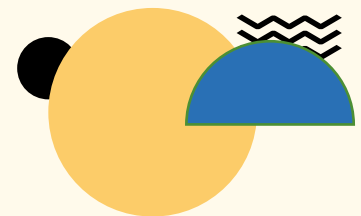


## HAPPY STRUCTURE - ELMA

### Toddlers adventure slide

*Platform height 1.50m*

ELMA is specially designed for the youngest adventurers. Standing at 1.50 meters, it offers a safe and exciting introduction to sliding. Easy climbing routes lead to the top, while a cozy play area underneath invites toddlers to explore, discover, and socialize.



# HAPPY STRUCTURE - ELMA

## Toddlers adventure slide

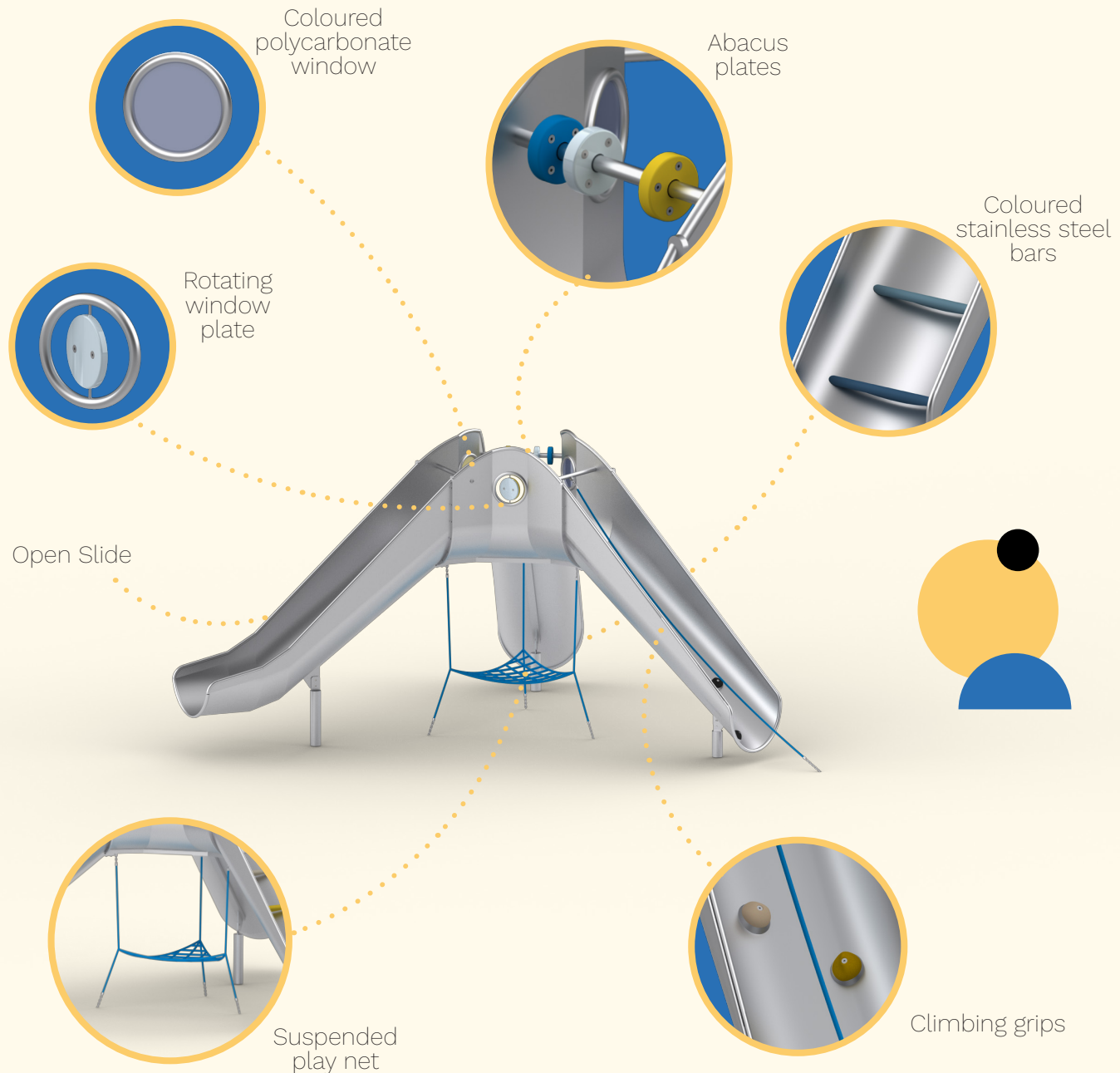
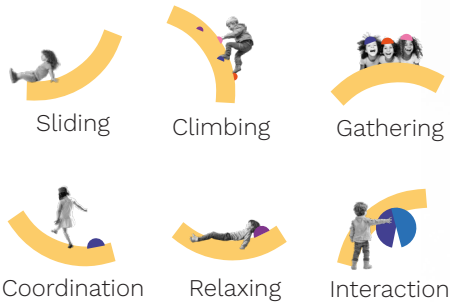
### Highlights:

- Slide – *fast, fun, and safe*
- Climbing Nets & Grips – *build strength and balance*
- Windows & Rotating Plates – *spark curiosity and imagination*
- Abacus Plates – *play meets learning*

### Product Information

|                     |                       |
|---------------------|-----------------------|
| Dimension L x W x H | 4.50m x 4.60m x 2.50m |
| Age group:          | 2-6 years             |
| Max falling height: | 1.50m                 |

### Play activities:

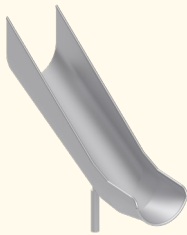


# HAPPY STRUCTURE - ELMA

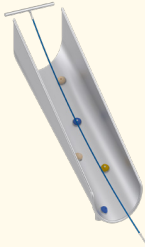
## Toddlers adventure slide

### Colour options available for:

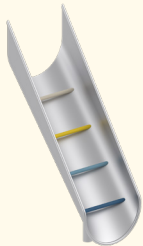
|                       |   |
|-----------------------|---|
| Main slide structure: | ✓ |
| Suspended Play Net:   | ✓ |
| Climbing Grips:       | ✓ |
| Coloured Windows:     | ✓ |
| Rotating Window:      | ✓ |
| Abacus Plates:        | ✓ |



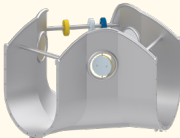
**Open Slide**  
A stainless steel slide starting from 1,5 m high offers an exciting descent that builds balance, spatial awareness, and core strength. Taking turns promotes patience and social awareness.



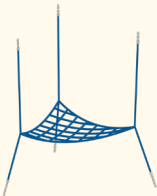
**Access Route with Grips & Rope**  
Equipped with climbing grips and reinforced rope, this access route develops strength, coordination, and problem-solving. Kids learn to navigate vertical movement while taking turns and supporting one another.



**Access Route with Steel Bars**  
Colorful stainless steel bars challenge children's balance, focus, and body control. The open design encourages anticipation and interaction, adding a social element to physical play.



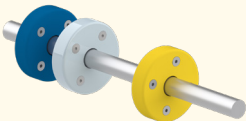
**Top Platform**  
This transition space connects climbing and sliding. Children pause here to observe, plan, and interact with others. It supports social play and decision-making before continuing the activity flow.



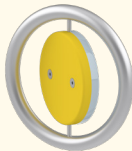
**Suspended Play Net**  
This rope net forms a flexible base for resting, wobbling, or gentle play. It offers a relaxing, slightly active area for social interaction and balance training.



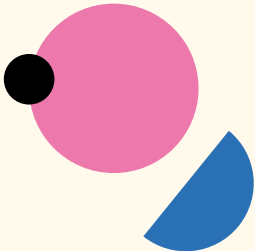
**Coloured Window**  
Transparent polycarbonate panels in bright colors shift children's visual perspective. Looking through them inspires wonder, imaginative play, and shared discoveries.



**Abacus Play**  
HDPE spinning panels on a horizontal bar allow kids to explore motion and patterns. The tactile experience supports motor skills and encourages collaborative or parallel play.

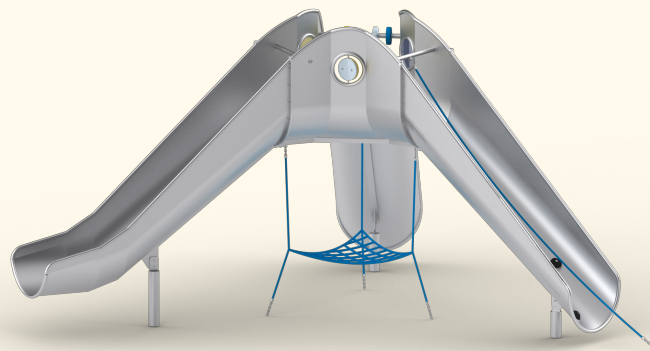
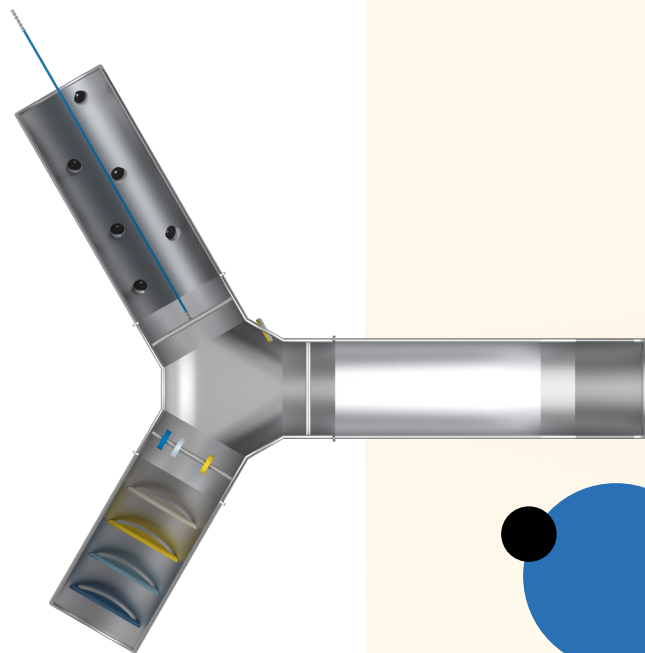


**Rotating window**  
A circular HDPE panel that opens and closes like a window, perfect for imaginative scenarios. It helps children understand visibility, surprise, and simple mechanics.



# HAPPY STRUCTURE - ELMA

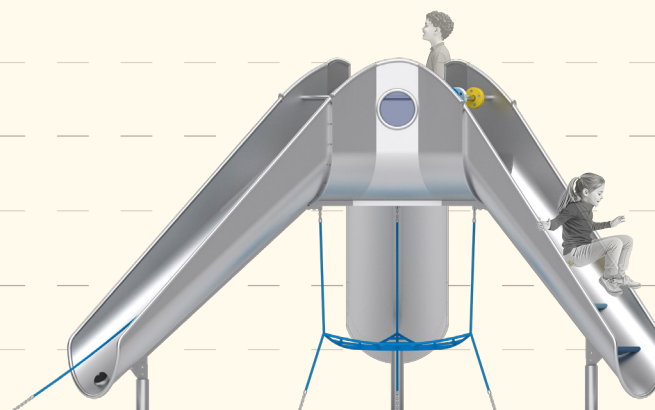
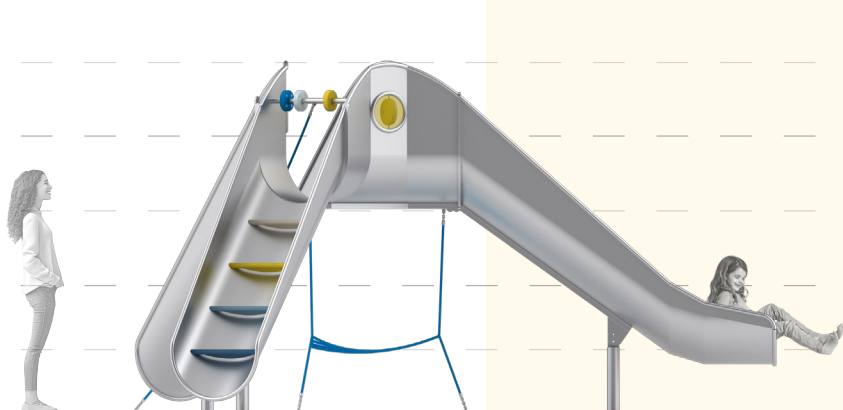
Toddlers adventure slide



3.00m

2.00m

1.00m



Objects and data subject to modification.

# HAPPY STRUCTURE - ELMA

## Toddlers adventure slide

### Installation information

Safety zone surfacing area: 7.50m x 8.10m

Concrete volume: 0.57 m<sup>3</sup>

Footing depth: 80cm/50cm

Shipment weight: TBD

Shipment box size: TBD

Lead time 6 weeks

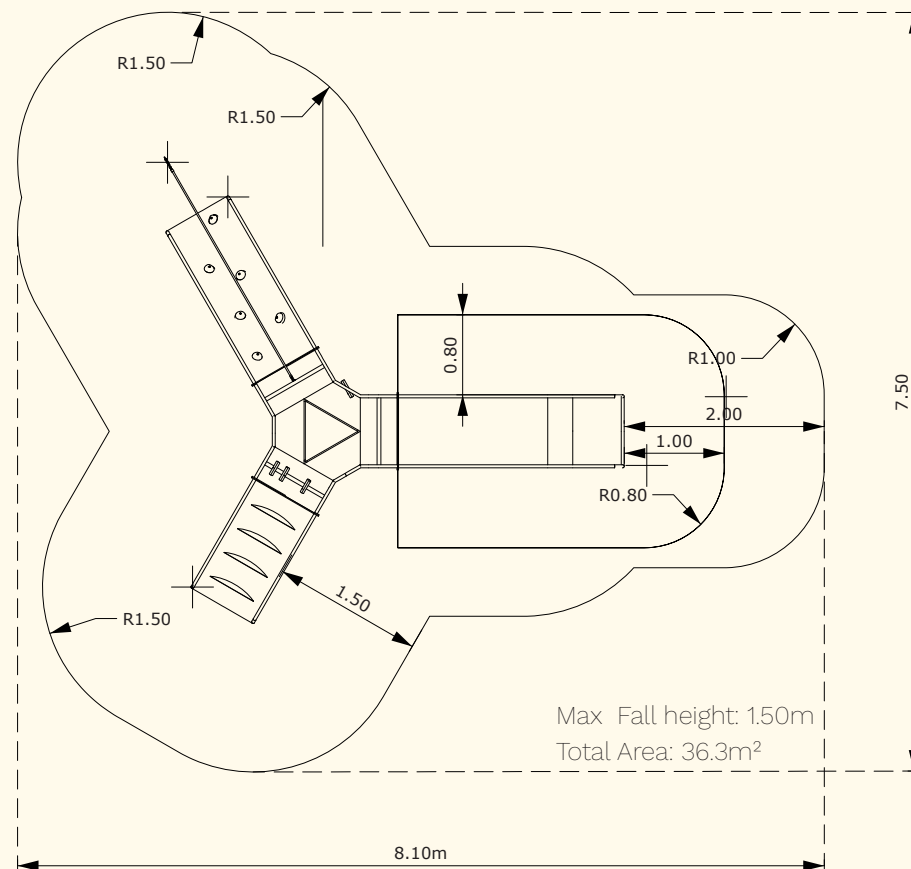
Warranty stainless steel parts 36 months

Warranty other parts 24 months

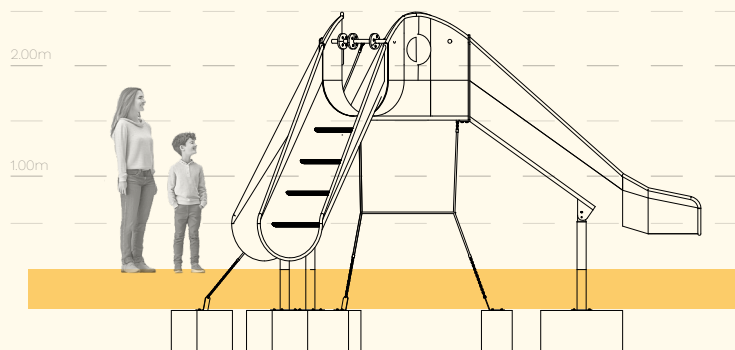
### Anchoring options:

-Surface mount Installation -10cm

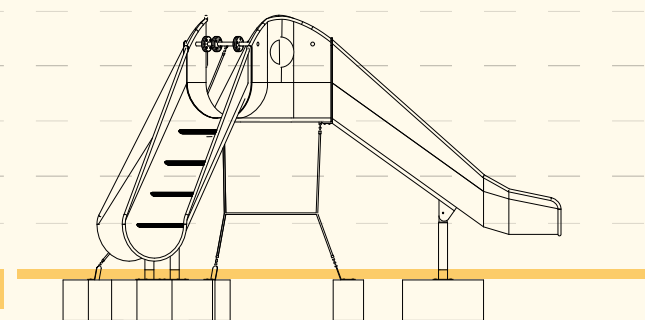
-Inground Installation -40cm



### Anchoring options:



Inground Installation -40cm



Surface mount Installation -10cm



MOMO



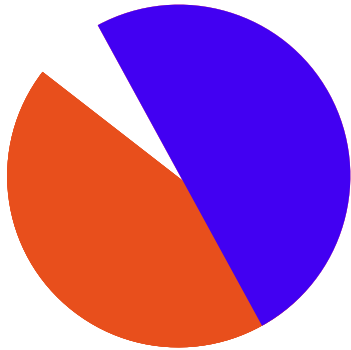


## HAPPY STRUCTURE - MOMO

### Toddlers adventure slide

*Platform height 1.50m*

MOMO redefines what a slide can be. With a 1,5-meter platform height, it's not just a slide - it's a dynamic playground in itself. Ground-level panels feature sound elements and interactive play items, while multiple climbing routes offer a fun challenge. The entire structure encourages kids to climb, explore, connect, and then slide. Each step sparking the next adventure.



# HAPPY STRUCTURE - MOMO

## Toddlers adventure slide

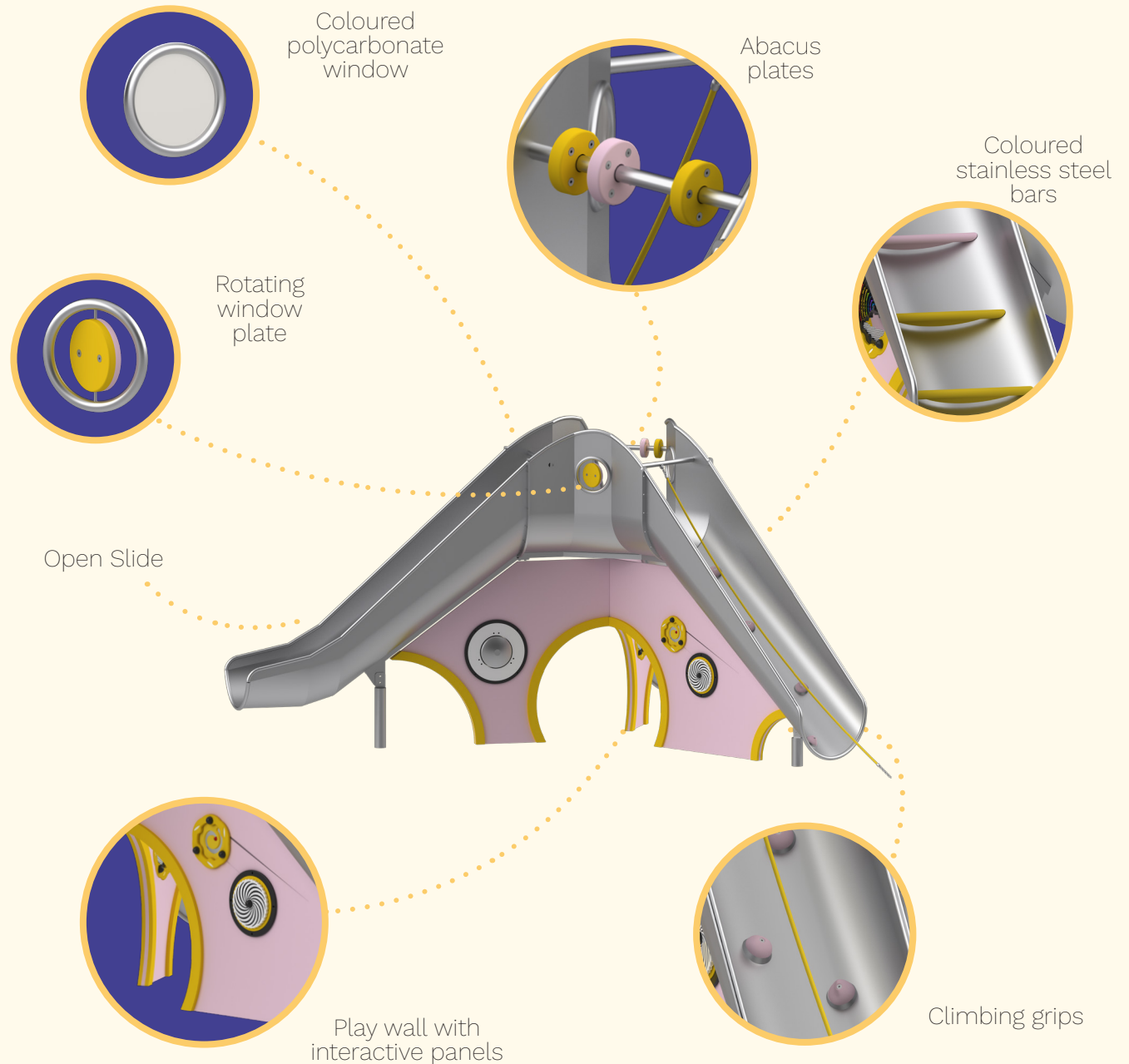
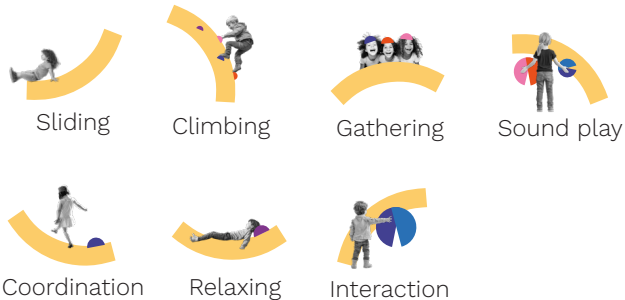
### Highlights:

- Slide – *fast, fun, and safe*
- Climbing Nets & Grips – *build strength and balance*
- Windows & Rotating Plates – *spark curiosity and imagination*
- Abacus Plates – *play meets learning*
- Sound Panels – *create rhythms and explore sounds*
- Optical Illusion Panels – *captivate the senses and inspire imagination*

### Product Information

|                     |                       |
|---------------------|-----------------------|
| Dimension L x W x H | 4.50m x 4.60m x 2.50m |
| Age group:          | 2-6 years             |
| Max falling height: | 1.50m                 |

### Play activities:





# HAPPY STRUCTURE - MOMO

## Toddlers adventure slide

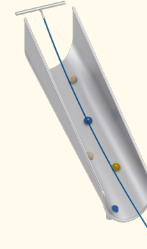
### Colour options available for:

|                       |   |
|-----------------------|---|
| Main slide structure: | ✓ |
| Climbing Grips:       | ✓ |
| Coloured Windows:     | ✓ |
| Rotating Window:      | ✓ |
| Abacus Plates:        | ✓ |
| Play wall with panels | ✓ |



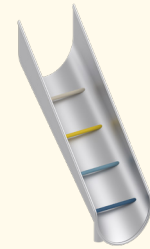
### Open Slide

A stainless steel slide starting from 1,5 m high offers an exciting descent that builds balance, spatial awareness, and core strength. Taking turns promotes patience and social awareness.



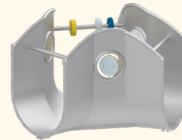
### Access Route with Grips & Rope

Equipped with climbing grips and reinforced rope, this access route develops strength, coordination, and problem-solving. Kids learn to navigate vertical movement while taking turns and supporting one another.



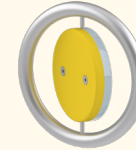
### Access Route with Steel Bars

Colorful stainless steel bars challenge children's balance, focus, and body control. The open design encourages anticipation and interaction, adding a social element to physical play.



### Top Platform

This transition space connects climbing and sliding. Children pause here to observe, plan, and interact with others. It supports social play and decision-making before continuing the activity flow.



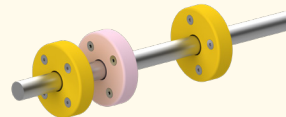
### Rotating window

A circular HDPE panel that opens and closes like a window, perfect for imaginative scenarios. It helps children understand visibility, surprise, and simple mechanics.



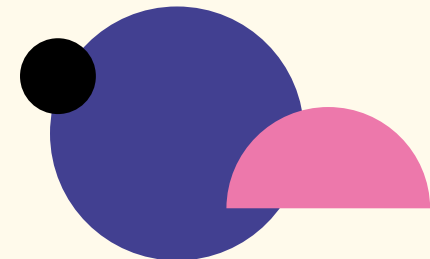
### Coloured Window

Transparent polycarbonate panels in bright colors shift children's visual perspective. Looking through them inspires wonder, imaginative play, and shared discoveries.



### Abacus Play

HDPE spinning panels on a horizontal bar allow kids to explore motion and patterns. The tactile experience supports motor skills and encourages collaborative or parallel play.



# HAPPY STRUCTURE - MOMO

Toddlers adventure slide

## Colour options available for:

Mini Spinning Spiral Optical Illusion Insert:

Mini Shaker insert:

Rainbow insert:

Wormhole Optical Illusion insert:

Tongue Drum Musical insert:



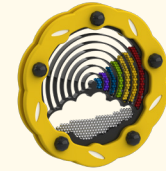
### Mini Spinning Spiral Optical Illusion Insert

Fun and engaging optical illusion which demonstrates how the brain can be tricked.



### Mini Shaker Insert

Turn the insert to see and hear hundreds of tiny balls tumble around.



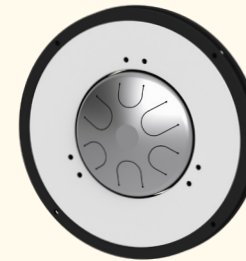
### Rainbow Insert

Rotate the drum and watch the coloured balls move around the rainbow.



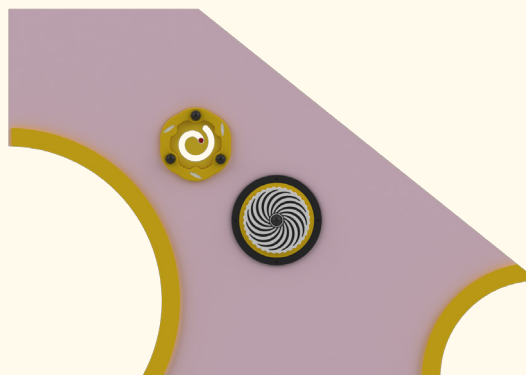
### Wormhole Optical Illusion Insert

Rotate to see swirling patterns as this mind-bending optical illusion comes to life.

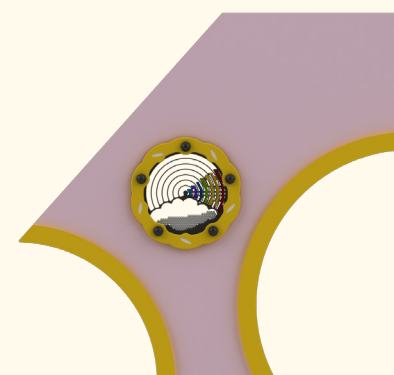


### Tongue Drum Musical Insert

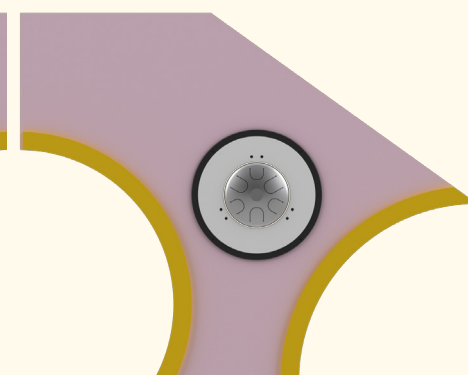
Superb oriental sounding stainless steel musical tongue drum played by hand.



View of panel 1  
front and back



View of panel 2



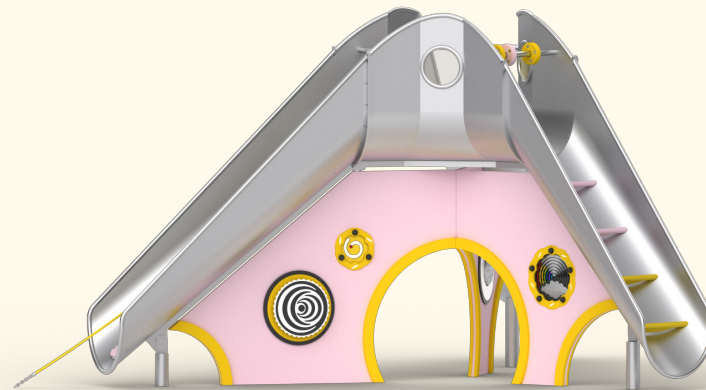
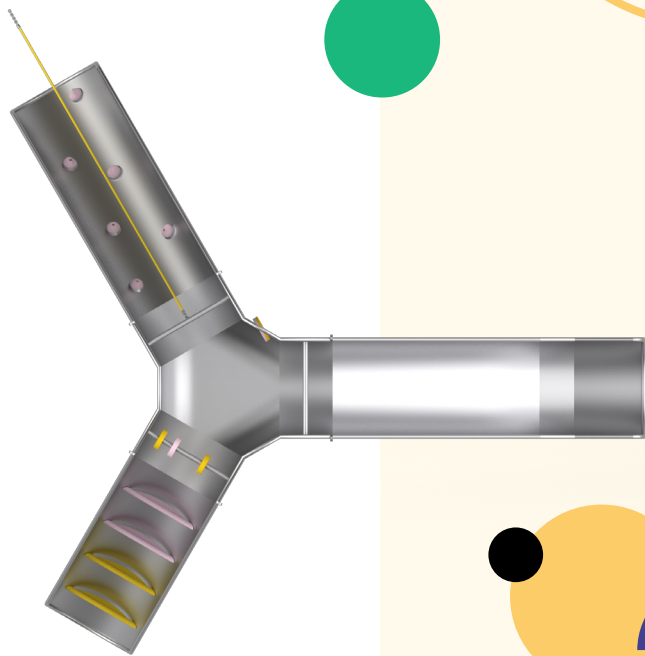
View of panel 3

Objects and data subject to modification.



# HAPPY STRUCTURE - MOMO

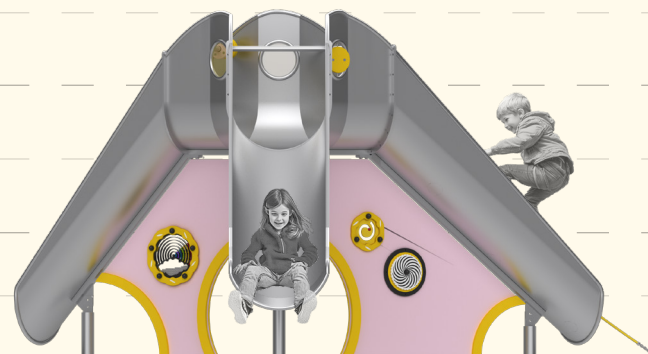
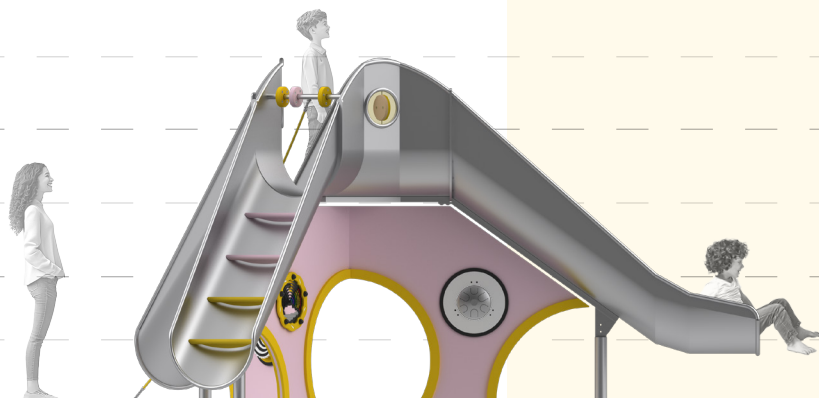
Toddlers adventure slide



3.00m

2.00m

1.00m



# HAPPY STRUCTURE - MOMO

## Toddlers adventure slide

### Installation information

Safety zone surfacing area: 7.50m x 8.10m

Concrete volume: 0.57 m<sup>3</sup>

Footing depth: 80cm/50cm

Shipment weight: TBD

Shipment box size: TBD

Lead time 6 weeks

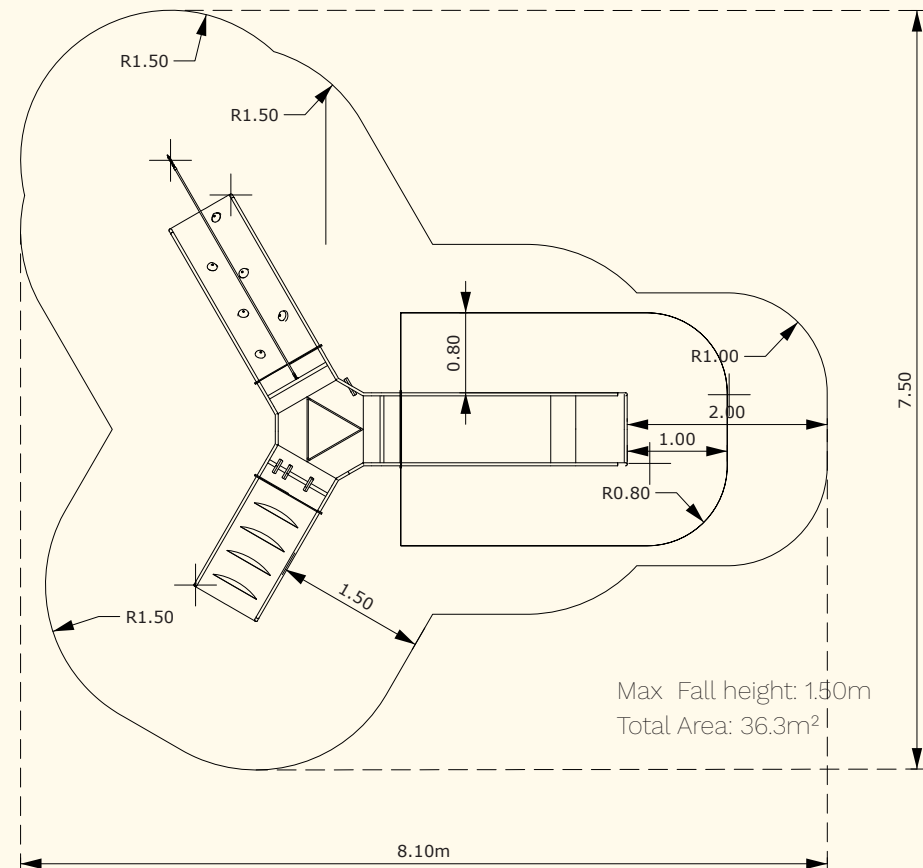
Warranty stainless steel parts 36 months

Warranty other parts 24 months

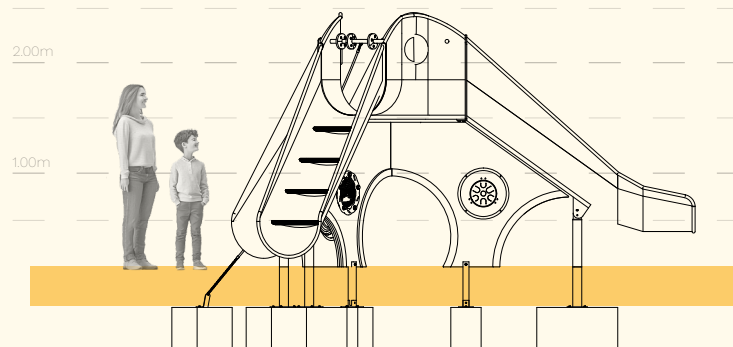
### Anchoring options:

-Surface mount Installation -10cm

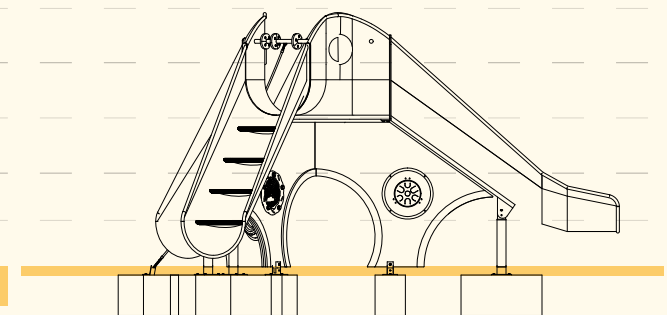
-Inground Installation -40cm



### Anchoring options:



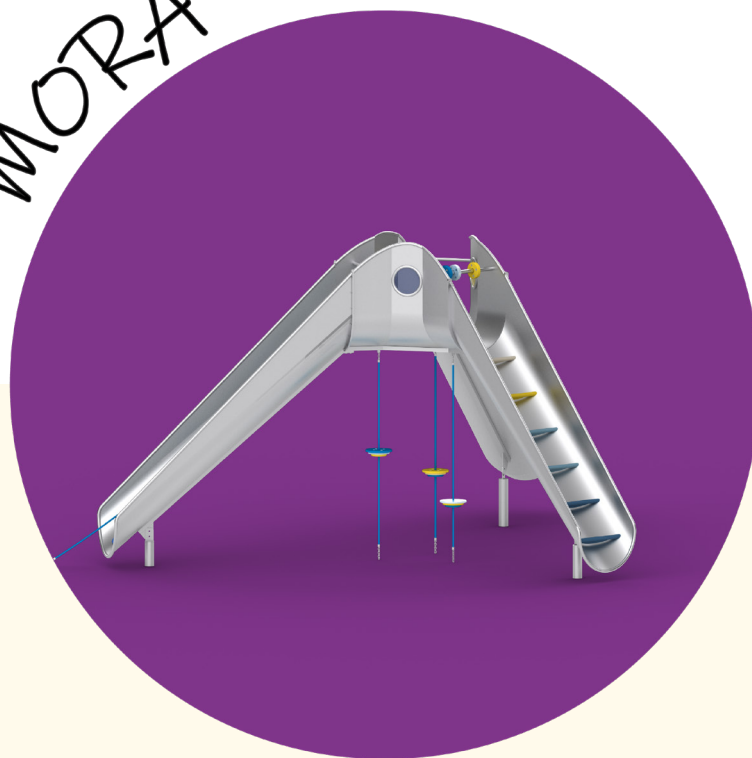
Inground Installation -40cm



Surface mount Installation -10cm



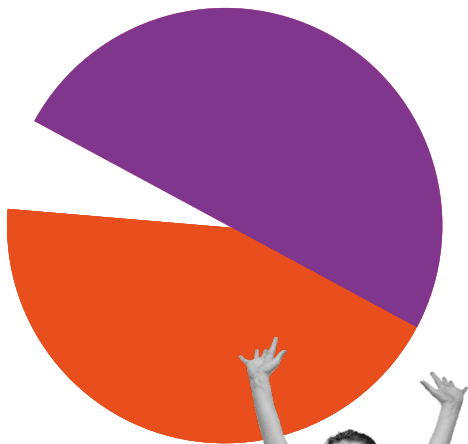
MORA



## HAPPY STRUCTURE - **MORA**

3 legs, 2m platform height

**MORA** is a minimalist's dream. Simple, sleek lines meet playful design in a slide that's both an art piece and a ride. Its sculptural form fits perfectly in any urban setting, bringing style and excitement to the heart of the playground.





# HAPPY STRUCTURE - MORA

3 legs, 2m platform height

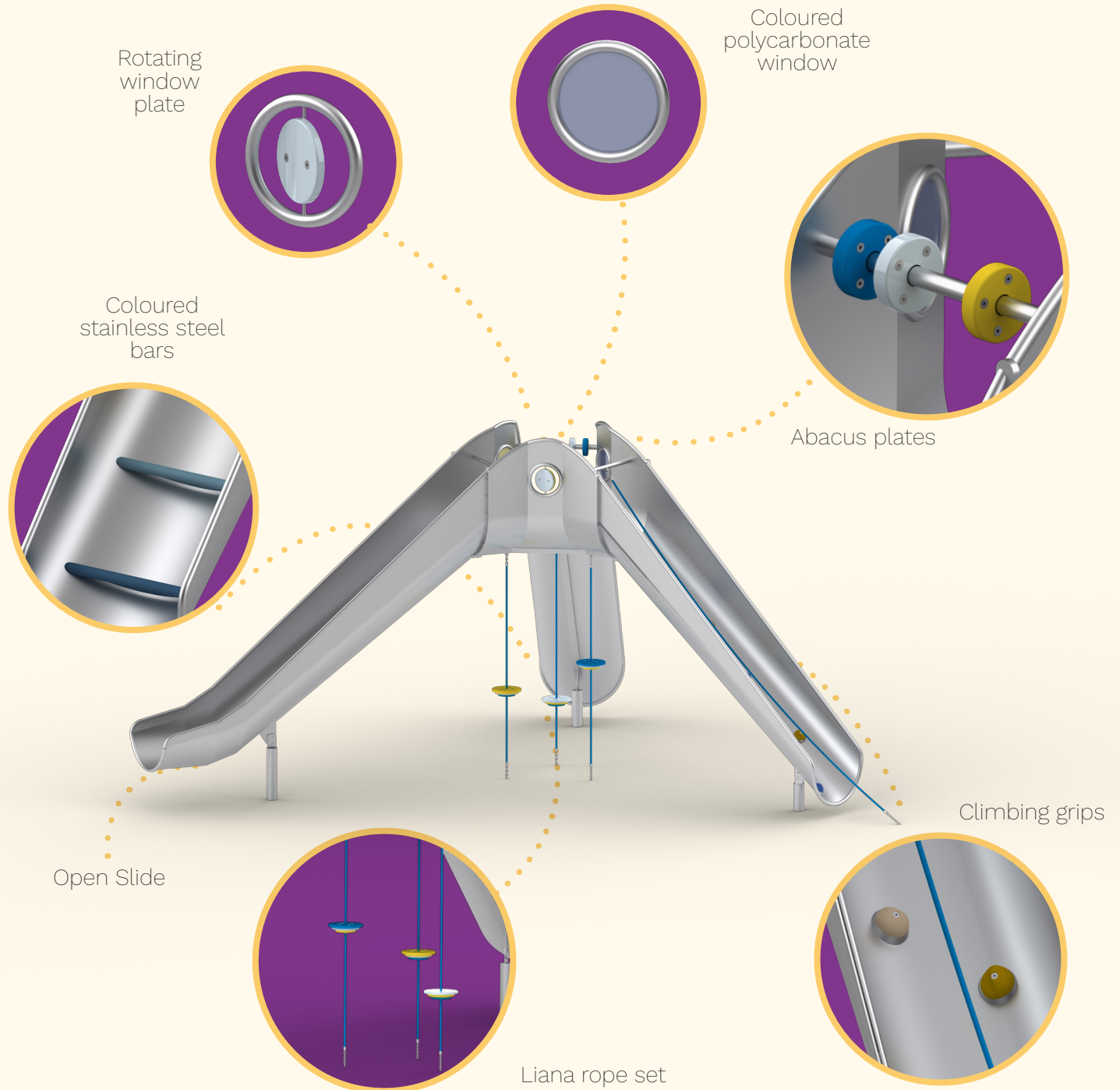
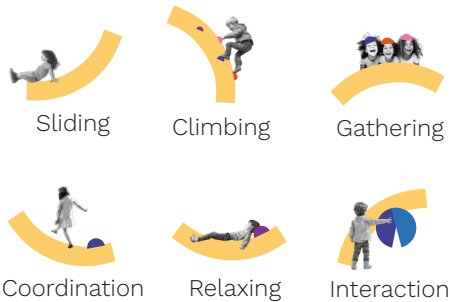
## Highlights:

- Slide – *fast, fun, and safe*
- Climbing Rope & Grips – *build strength and balance*
- Windows & Rotating Plates – *spark curiosity and imagination*
- Abacus Plates – *play meets learning*
- Set of Liana Ropes with Discs – *balance, coordination, and endless climbing fun*

## Product Information

|                     |                       |
|---------------------|-----------------------|
| Dimension L x W x H | 5.50m x 5.50m x 3.00m |
| Age group:          | 3-99 years            |
| Max falling height: | 2.00m                 |

## Play activities:

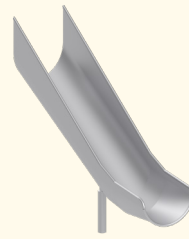


# HAPPY STRUCTURE - MORA

3 legs, 2m platform height

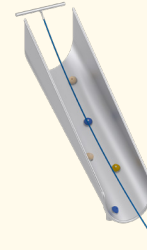
## Colour options available for:

|                       |   |
|-----------------------|---|
| Main slide structure: | ✓ |
| Climbing Grips:       | ✓ |
| Coloured Windows:     | ✓ |
| Rotating Window:      | ✓ |
| Abacus Plates:        | ✓ |
| Liana rope set:       | ✓ |



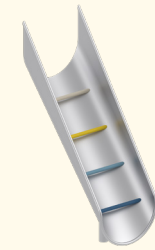
### Open Slide

A stainless steel slide starting from 2 m high offers an exciting descent that builds balance, spatial awareness, and core strength. Taking turns promotes patience and social awareness.



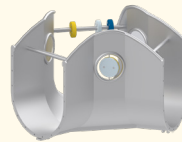
### Access Route with Grips & Rope

Equipped with climbing grips and reinforced rope, this access route develops strength, coordination, and problem-solving. Kids learn to navigate vertical movement while taking turns and supporting one another.



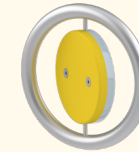
### Access Route with Steel Bars

Colorful stainless steel bars challenge children's balance, focus, and body control. The open design encourages anticipation and interaction, adding a social element to physical play.



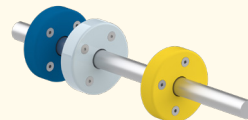
### Top Platform

This transition space connects climbing and sliding. Children pause here to observe, plan, and interact with others. It supports social play and decision-making before continuing the activity flow.



### Rotating window

A circular HDPE panel that opens and closes like a window, perfect for imaginative scenarios. It helps children understand visibility, surprise, and simple mechanics.



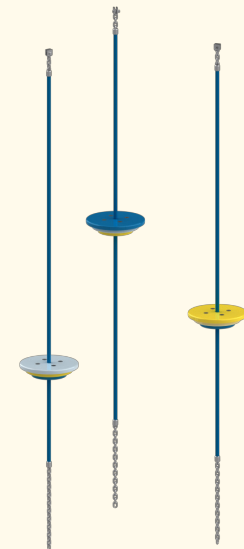
### Abacus Play

HDPE spinning panels on a horizontal bar allow kids to explore motion and patterns. The tactile experience supports motor skills and encourages collaborative or parallel play.



### Coloured Window

Transparent polycarbonate panels in bright colors shift children's visual perspective. Looking through them inspires wonder, imaginative play, and shared discoveries.



### Liana ropes set

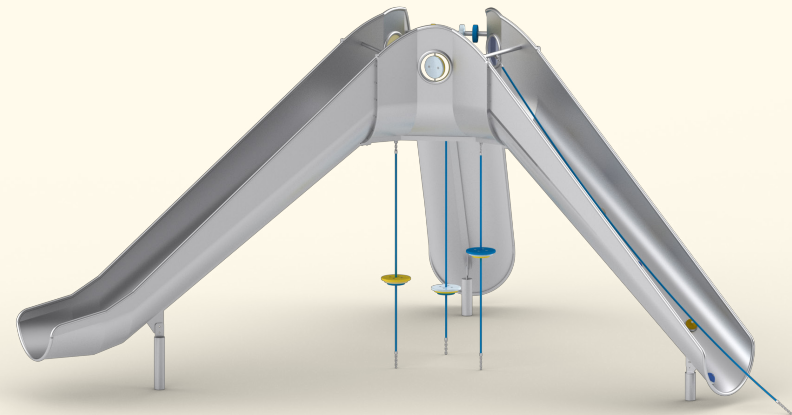
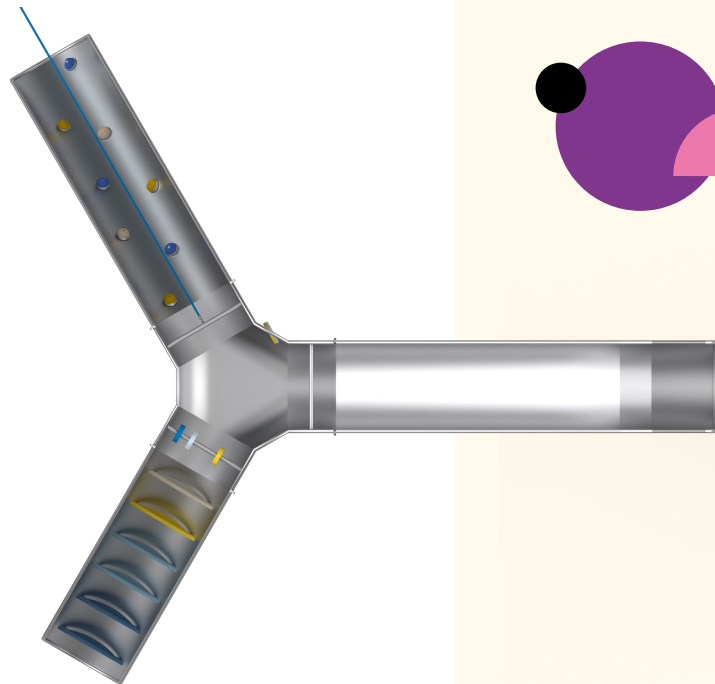
Three sturdy ropes suspend a round HDPE disc beneath the slide platform, creating a playful spot to sit, sway, or gather with friends. Balancing on the seat develops core strength, coordination, and spatial awareness.





# HAPPY STRUCTURE - MORA

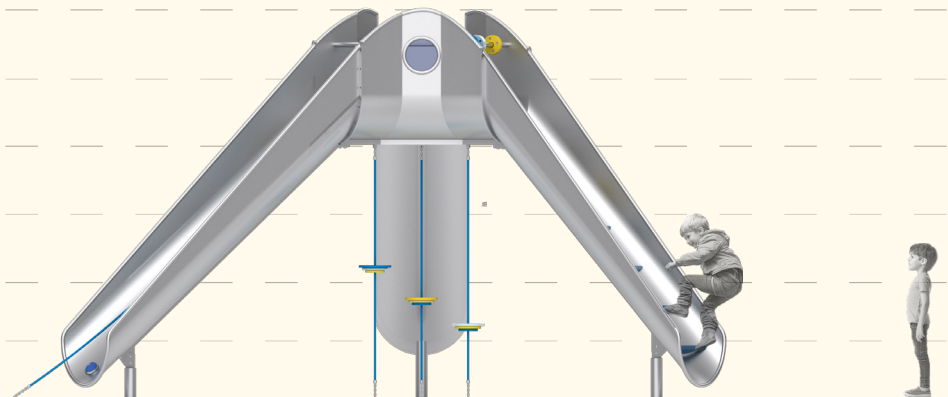
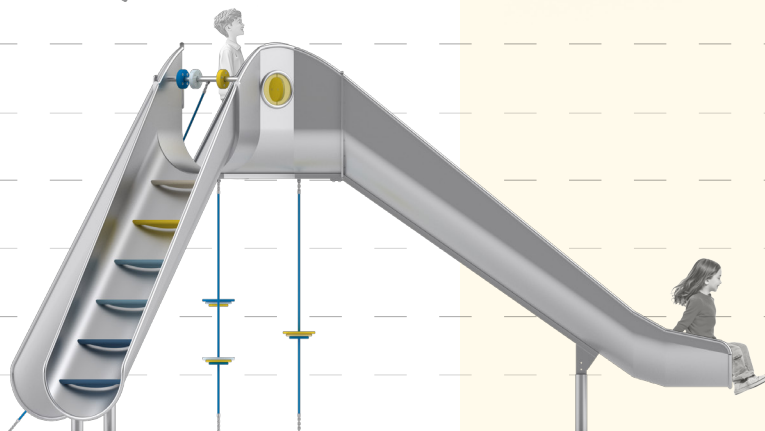
3 legs, 2m platform height



3.00m

2.00m

1.00m



# HAPPY STRUCTURE - MORA

3 legs, 2m platform height

## Installation information

Safety zone surfacing area: 8.50m x 9.10m

Concrete volume: 0,57 m<sup>3</sup>

Footing depth: 80cm/50cm

Shipment weight: TBD

Shipment box size: TBD

Lead time 6 weeks

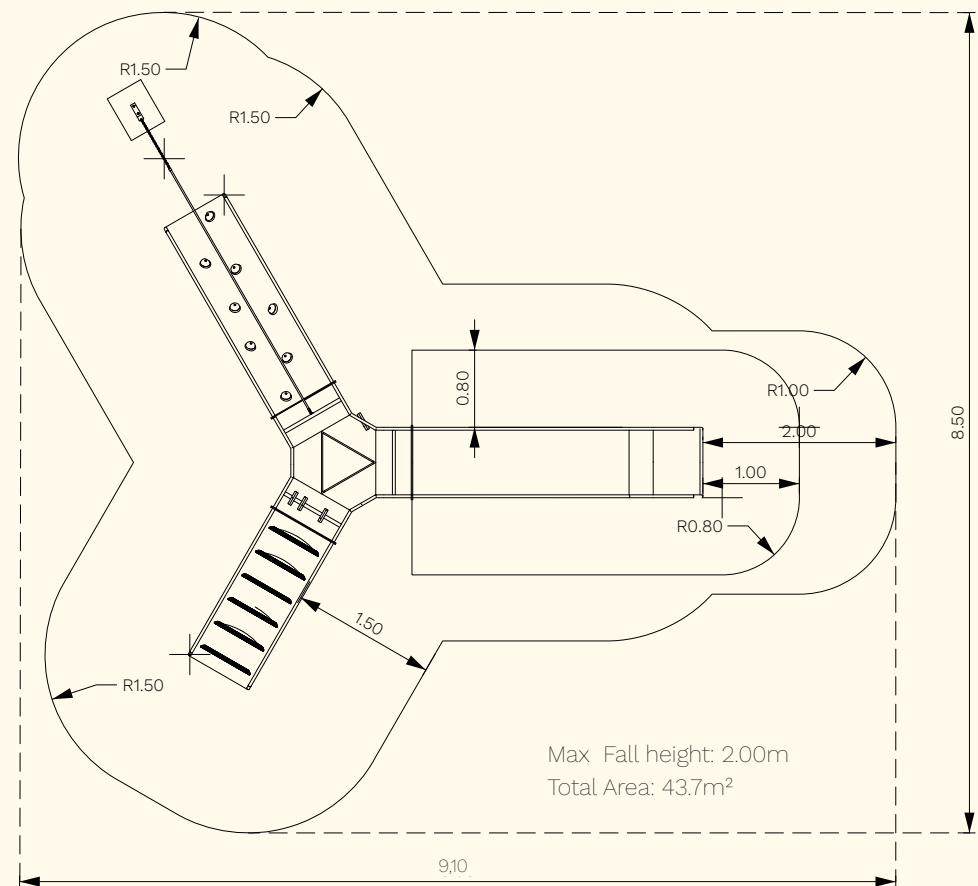
Warranty stainless steel parts 36 months

Warranty other parts 24 months

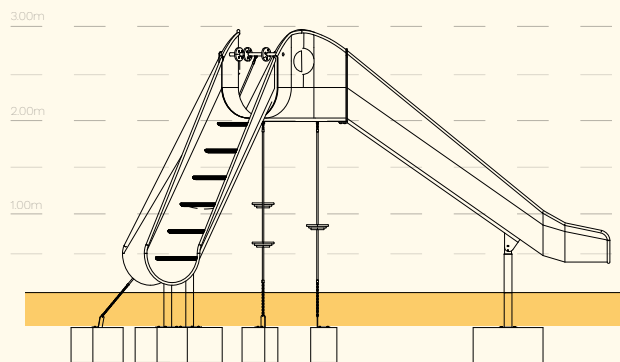
## Anchoring options:

-Surface mount Installation -10cm

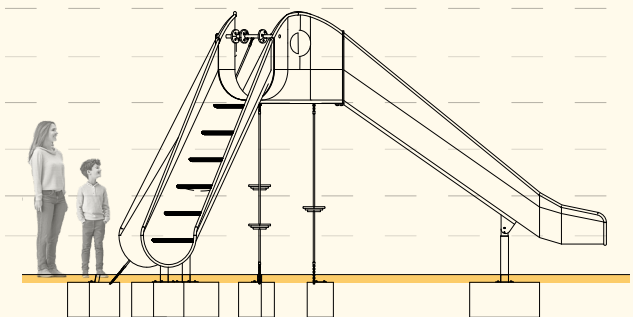
-Inground Installation -40cm



## Anchoring options:



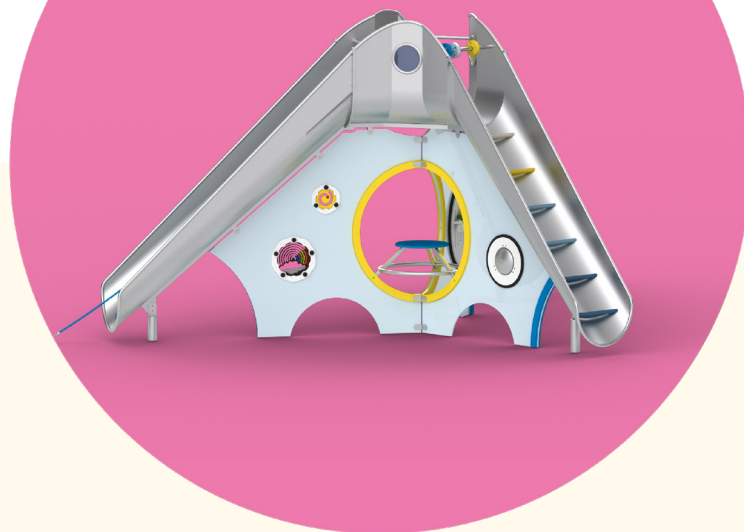
Inground Installation -40cm



Surface mount Installation -10cm



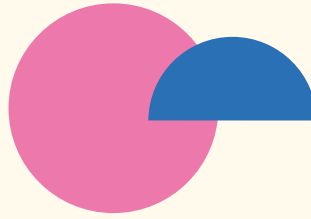
MALINA



## HAPPY STRUCTURE - MALINA

3 legs, 2m platform height

**MALINA** redefines what a slide can be. With a 2-meter platform height, it's not just a slide - it's a dynamic playground in itself. Ground-level panels feature sound elements and interactive play items, while multiple climbing routes offer a fun challenge. At the heart of the structure is a central gathering table - an inviting spot for social play, creativity, or a moment of rest. The entire structure encourages kids to climb, explore, connect, and then slide. Each step sparking the next adventure.



# HAPPY STRUCTURE - MALINA

3 legs, 2m platform height

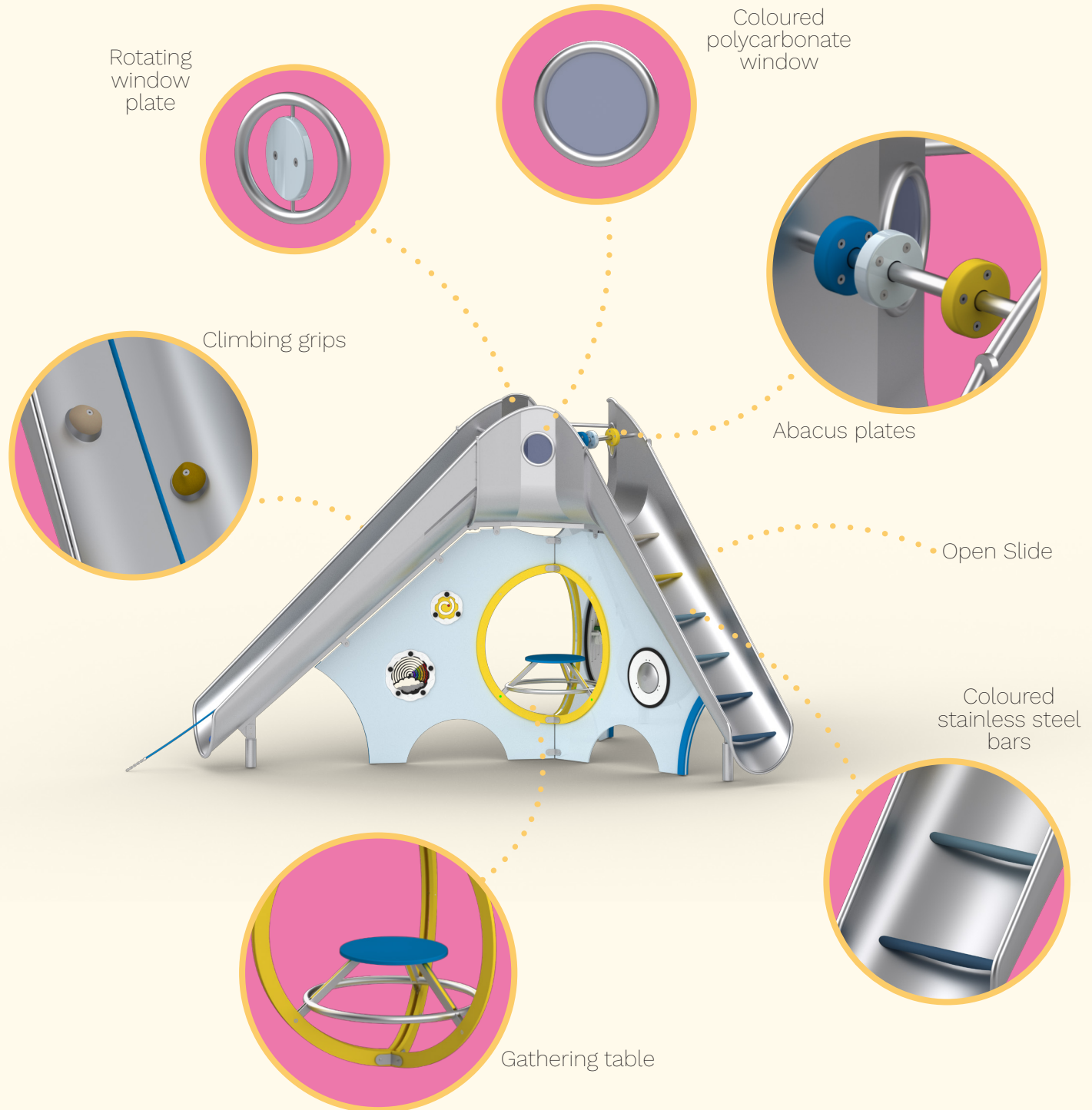
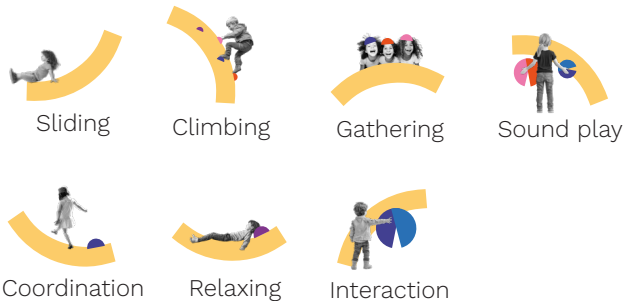
## Highlights:

- Slide – *fast, fun, and safe*
- Climbing Rope & Grips – *build strength and balance*
- Windows & Rotating Plates – *spark curiosity and imagination*
- Abacus Plates – *play meets learning*
- Sound Panels – *create rhythms and explore music*
- Optical Illusion Panels – *captivate the senses and inspire imagination*
- Gathering Table – *inviting spot for social play and rest*

## Product Information

|                     |                       |
|---------------------|-----------------------|
| Dimension L x W x H | 5.50m x 5.50m x 3.00m |
| Age group:          | 3-99 years            |
| Max falling height: | 2.00m                 |

## Play activities:

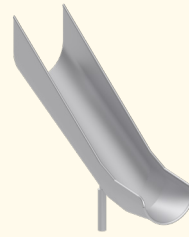


# HAPPY STRUCTURE - MALINA

3 legs, 2m platform height

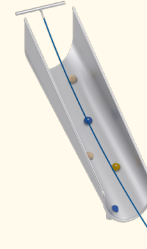
## Colour options available for:

|                       |   |
|-----------------------|---|
| Main slide structure: | ✓ |
| Climbing Grips:       | ✓ |
| Coloured Windows:     | ✓ |
| Rotating Window:      | ✓ |
| Abacus Plates:        | ✓ |



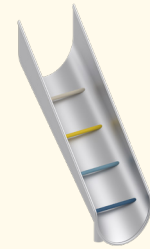
### Open Slide

A stainless steel slide starting from 2 m high offers an exciting descent that builds balance, spatial awareness, and core strength. Taking turns promotes patience and social awareness.



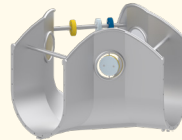
### Access Route with Grips & Rope

Equipped with climbing grips and reinforced rope, this access route develops strength, coordination, and problem-solving. Kids learn to navigate vertical movement while taking turns and supporting one another.



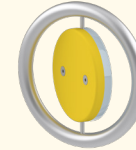
### Access Route with Steel Bars

Colorful stainless steel bars challenge children's balance, focus, and body control. The open design encourages anticipation and interaction, adding a social element to physical play.



### Top Platform

This transition space connects climbing and sliding. Children pause here to observe, plan, and interact with others. It supports social play and decision-making before continuing the activity flow.



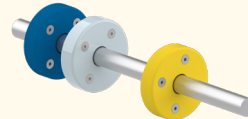
### Rotating window

A circular HDPE panel that opens and closes like a window, perfect for imaginative scenarios. It helps children understand visibility, surprise, and simple mechanics.



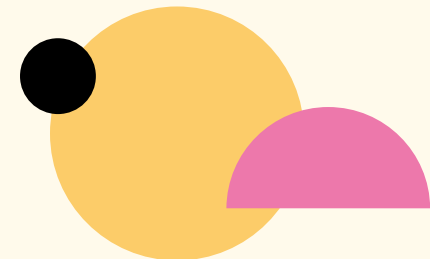
### Coloured Window

Transparent polycarbonate panels in bright colors shift children's visual perspective. Looking through them inspires wonder, imaginative play, and shared discoveries.



### Abacus Play

HDPE spinning panels on a horizontal bar allow kids to explore motion and patterns. The tactile experience supports motor skills and encourages collaborative or parallel play.





# HAPPY STRUCTURE - MALINA

3 legs, 2m platform height

## Colour options available for:

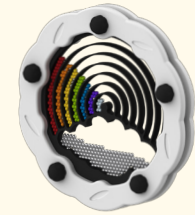
- Mini Spinning Spiral Optical Illusion Insert: ✓
- Mini Shaker insert: ✓
- Rainbow insert: ✓
- Wormhole Optical Illusion insert: ✓
- Tongue Drum Musical insert: ✓
- Diatonic Cam Chimes Musical insert ✓



**Mini Spinning Spiral Optical Illusion Insert**  
Fun and engaging optical illusion which demonstrates how the brain can be tricked.



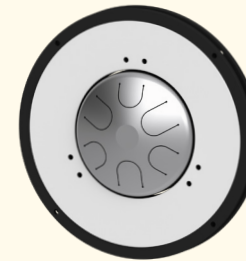
**Mini Shaker Insert**  
Turn the insert to see and hear hundreds of tiny balls tumble around.



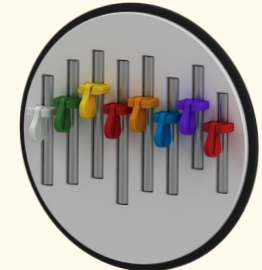
**Rainbow Insert**  
Rotate the drum and watch the coloured balls move around the rainbow.



**Wormhole Optical Illusion Insert**  
Rotate to see swirling patterns as this mind-bending optical illusion comes to life.



**Tongue Drum Musical Insert**  
Superb oriental sounding stainless steel musical tongue drum played by hand.



**Diatonic Cam Chimes Musical Insert**  
With 8 tube chimes C-C and custom-designed, free-swivelling cams that replace traditional beaters.



View of panel 1  
front and back



View of panel 2

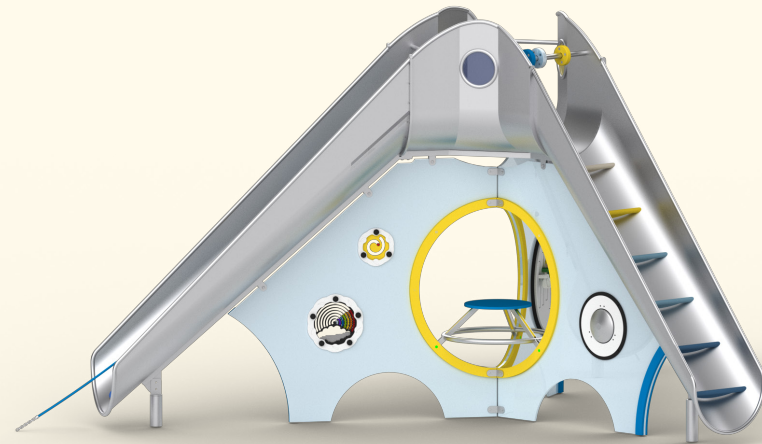
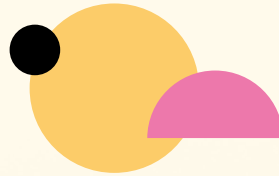
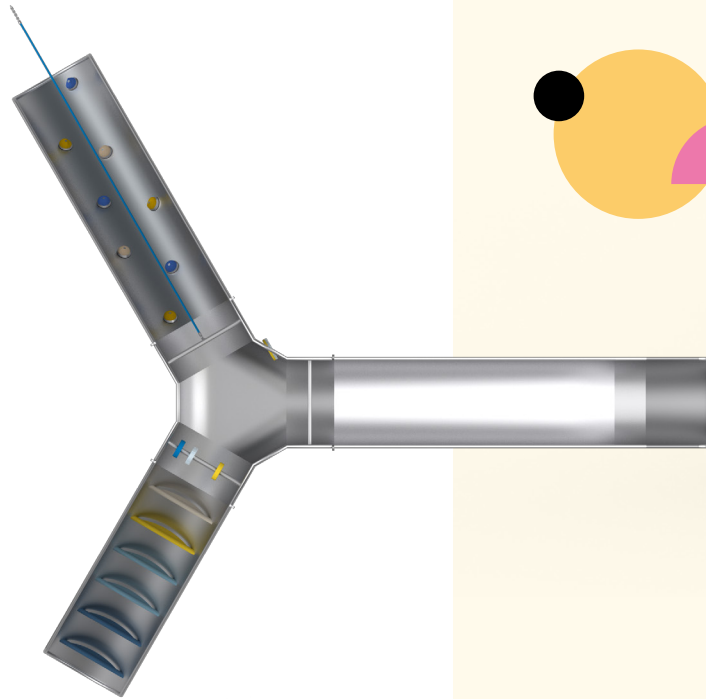
View of panel 3

Objects and data subject to modification.



# HAPPY STRUCTURE - MALINA

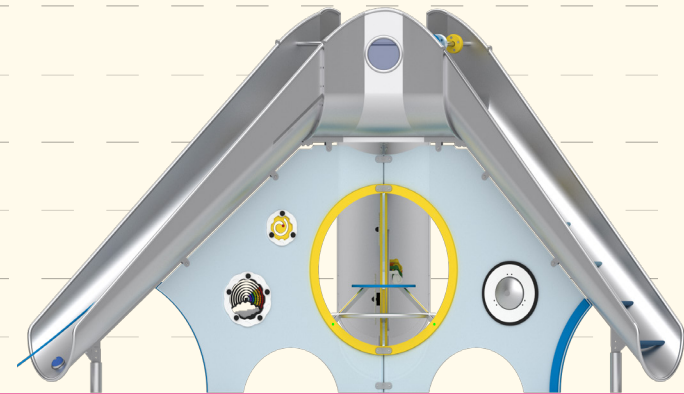
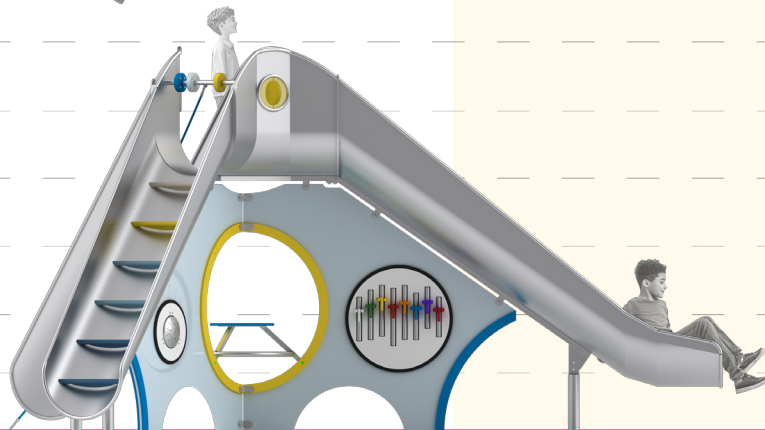
3 legs, 2m platform height



3.00m

2.00m

1.00m





# HAPPY STRUCTURE - MALINA

3 legs, 2m platform height

## Installation information

Safety zone surfacing area: 8.50m x 9.10m

Concrete volume: 0,68 m<sup>3</sup>

Footing depth: 80cm/50cm

Shipment weight: TBD

Shipment box size: TBD

Lead time 6 weeks

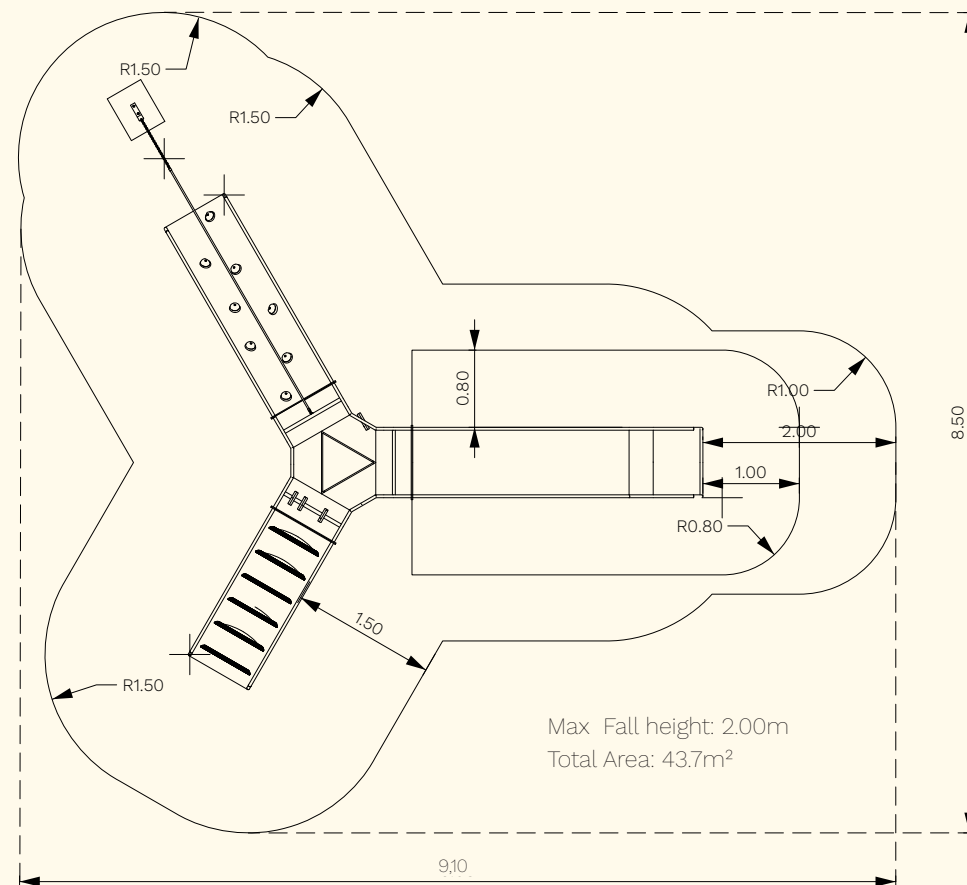
Warranty stainless steel parts 36 months

Warranty other parts 24 months

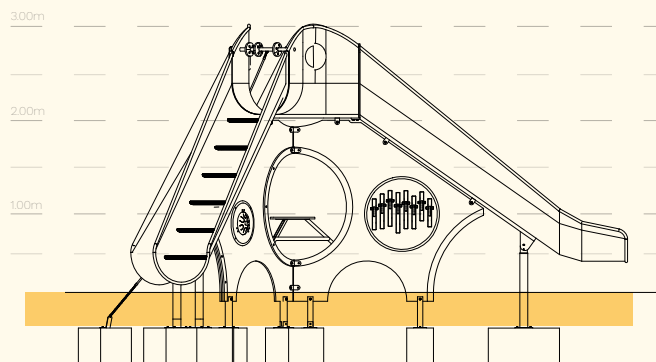
## Anchoring options:

-Surface mount Installation -10cm

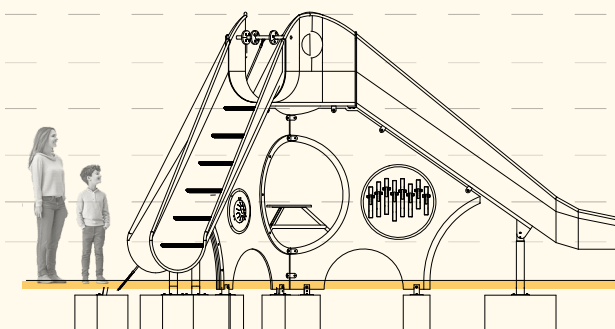
-Inground Installation -40cm



## Anchoring options:



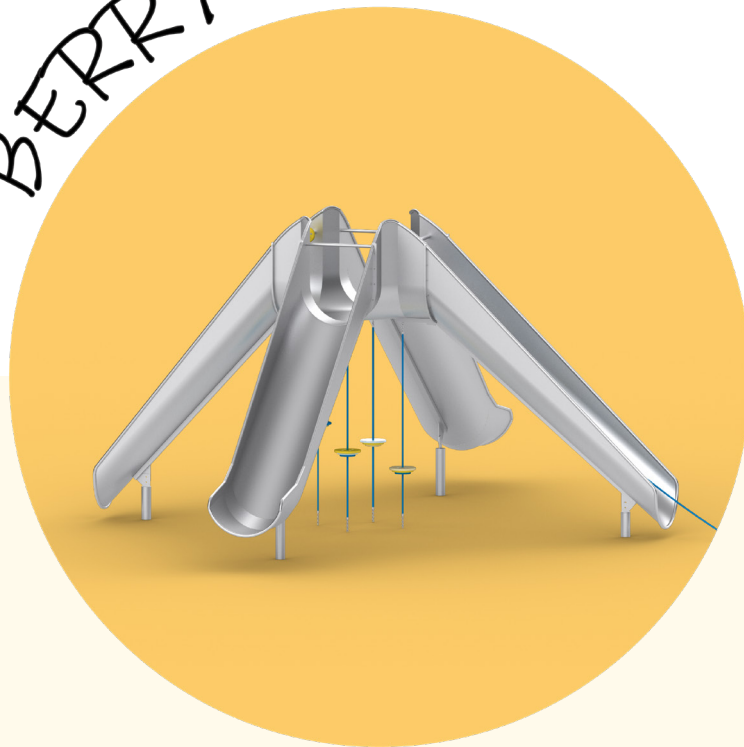
Inground Installation -40cm



Surface mount Installation -10cm



BERRY



## HAPPY STRUCTURE - BERRY

4 legs, 2m platform height

BERRY doubles the excitement with two slides in one. Two climbing routes lead to the central platform, offering endless ways to play. Whether racing down or exploring every angle of the structure, kids will find something new with every turn.



# HAPPY STRUCTURE - BERRY

4 legs, 2m platform height

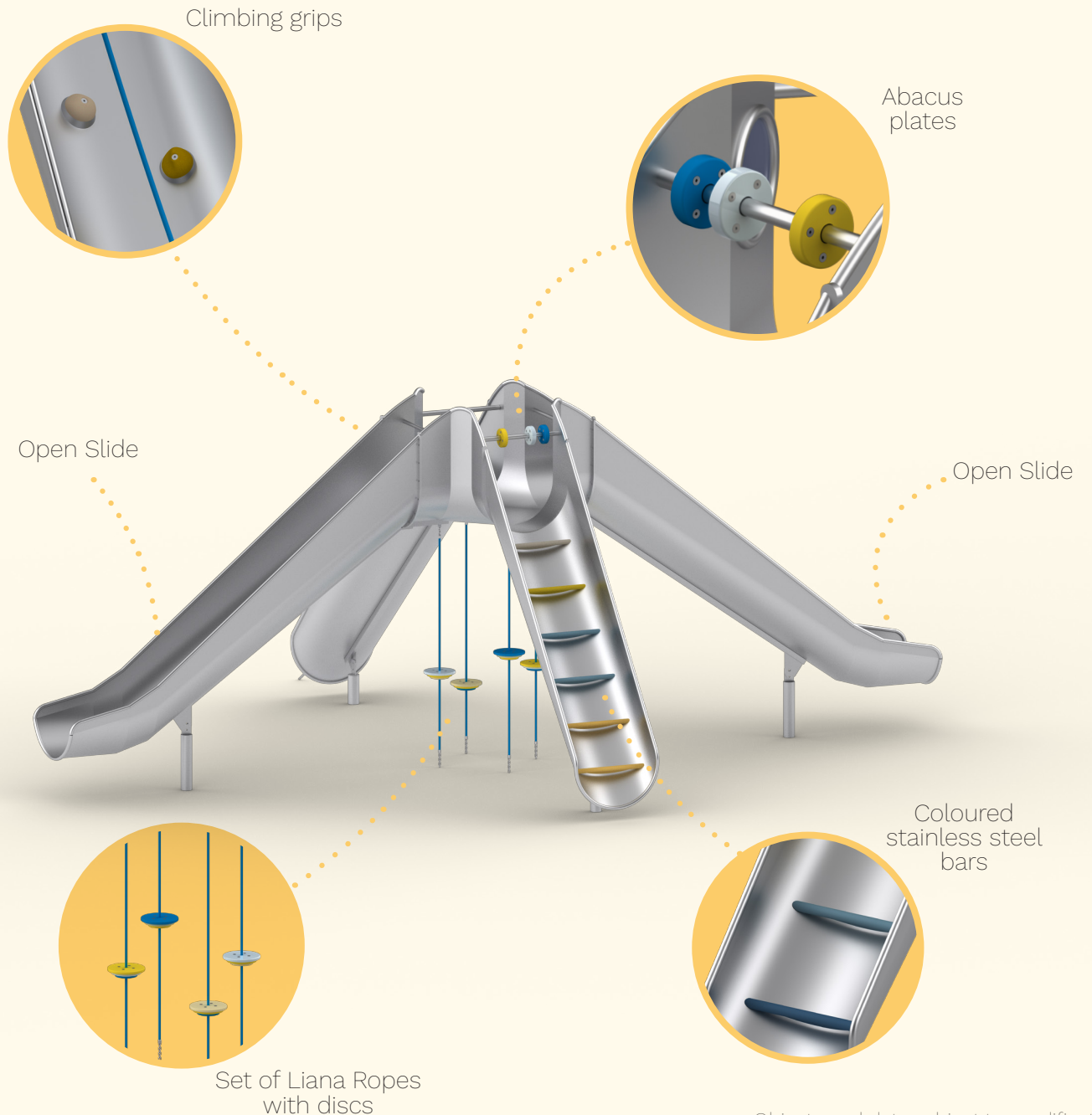
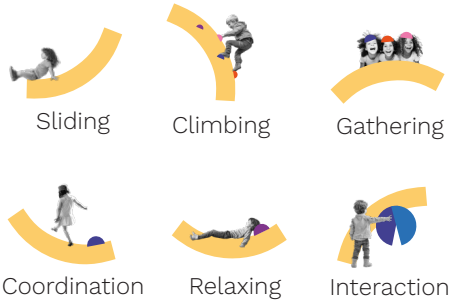
## Highlights:

- Dual Slides – *fast, fun, and safe*
- Climbing Rope & Grips – *build strength and balance*
- Windows & Rotating Plates – *spark curiosity and imagination*
- Abacus Plates – *play meets learning*
- Set of Liana Ropes with Discs – *balance, coordination, and endless climbing fun*

## Product Information

|                     |                       |
|---------------------|-----------------------|
| Dimension L x W x H | 7.50m x 5.50m x 3.00m |
| Age group:          | 3-99 years            |
| Max falling height: | 2.00m                 |

## Play activities:



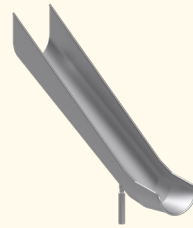
Objects and data subject to modification.

# HAPPY STRUCTURE - BERRY

4 legs, 2m platform height

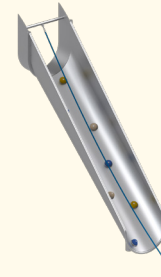
## Colour options available for:

|                       |   |
|-----------------------|---|
| Main slide structure: | ✓ |
| Climbing Grips:       | ✓ |
| Abacus Plates:        | ✓ |
| Liana rope set:       | ✓ |



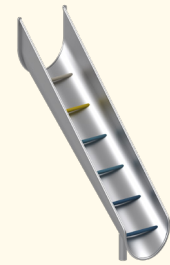
### 2x Open Slide

Two stainless steel slides starting from 2 m high offers an exciting descent that builds balance, spatial awareness, and core strength. Kids can race down using both slides.



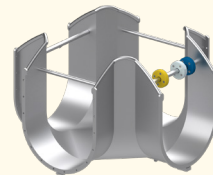
### Access Route with Grips & Rope

Equipped with climbing grips and reinforced rope, this access route develops strength, coordination, and problem-solving. Kids learn to navigate vertical movement while taking turns and supporting one another.



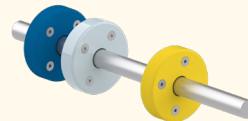
### Access Route with Steel Bars

Colorful stainless steel bars challenge children's balance, focus, and body control. The open design encourages anticipation and interaction, adding a social element to physical play.



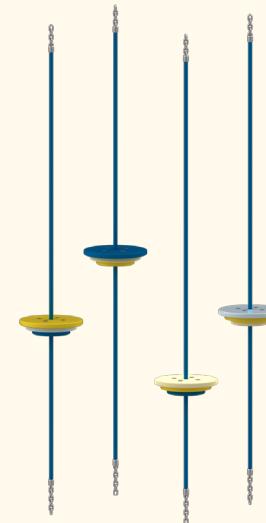
### Top Platform

This transition space connects climbing and sliding. Children pause here to observe, plan, and interact with others. It supports social play and decision-making before continuing the activity flow.



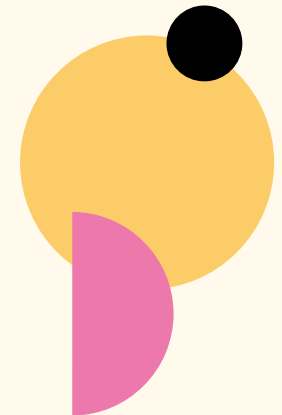
### Abacus Play

HDPE spinning panels on a horizontal bar allow kids to explore motion and patterns. The tactile experience supports motor skills and encourages collaborative or parallel play.



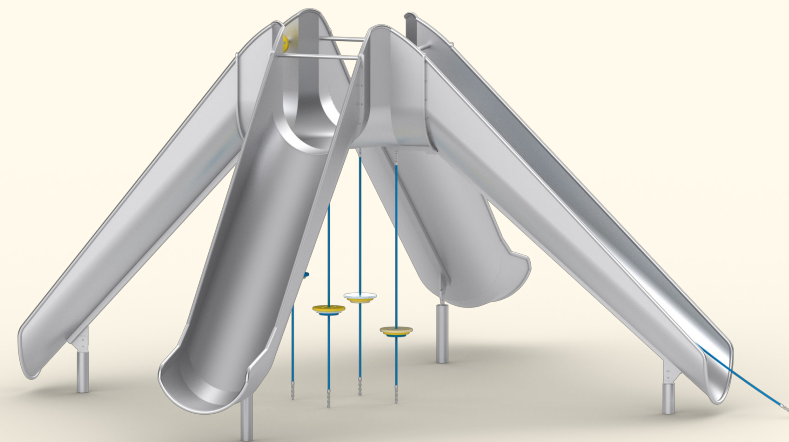
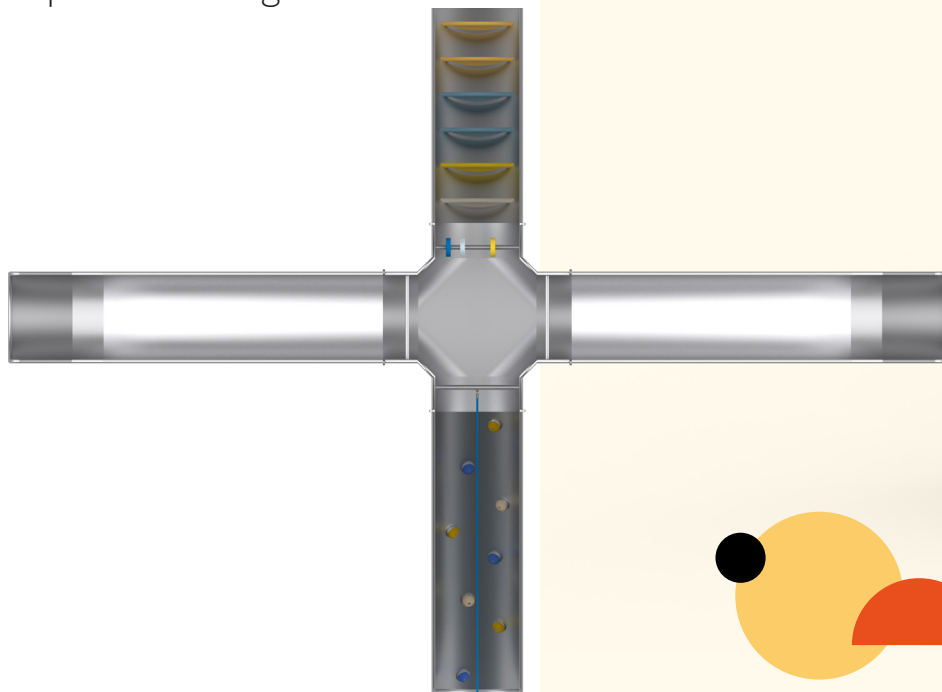
### Liana ropes set

Three sturdy ropes suspend a round HDPE disc beneath the slide platform, creating a playful spot to sit, sway, or gather with friends. Balancing on the seat develops core strength, coordination, and spatial awareness.



# HAPPY STRUCTURE - BERRY

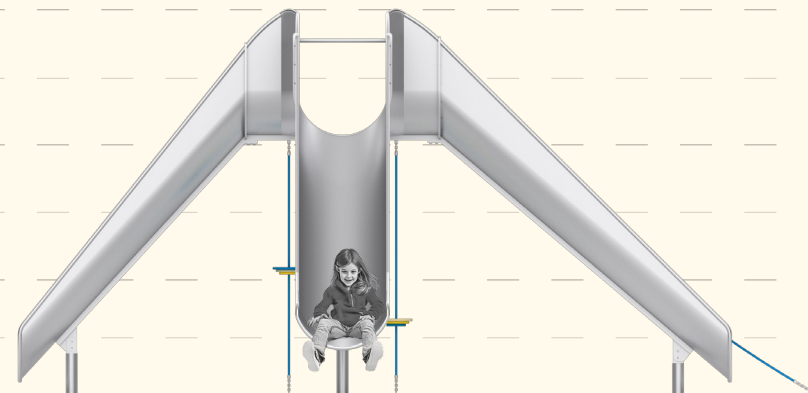
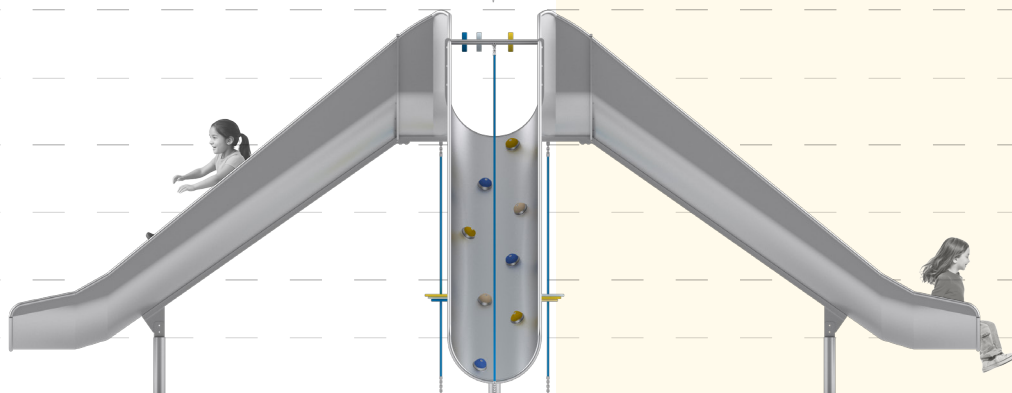
4 legs, 2m platform height



3.00m

2.00m

1.00m





# HAPPY STRUCTURE - BERRY

4 legs, 2m platform height

## Installation information

Safety zone surfacing area: 11.50m x 9.15m

Concrete volume: 0.73 m<sup>3</sup>

Footing depth: 80cm/50cm

Shipment weight: TBD

Shipment box size: TBD

Lead time 6 weeks

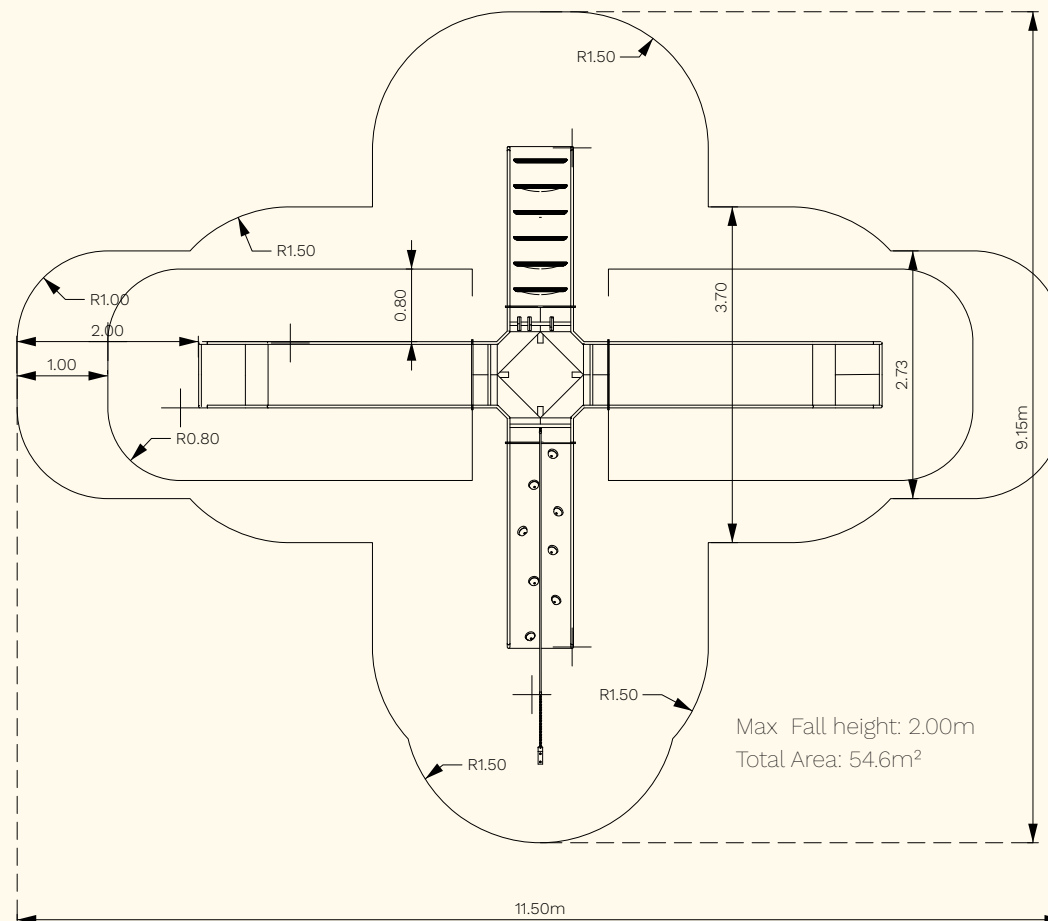
Warranty stainless steel parts 36 months

Warranty other parts 24 months

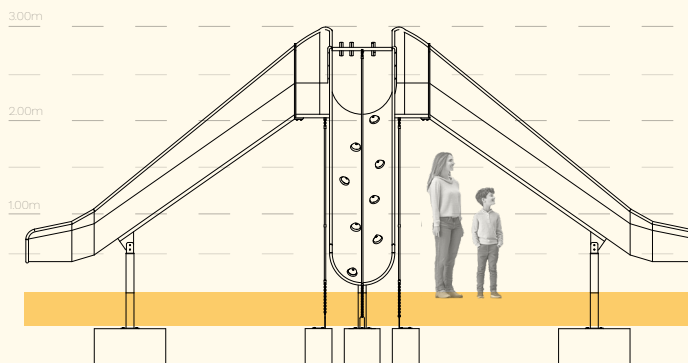
## Anchoring options:

-Surface mount Installation -10cm

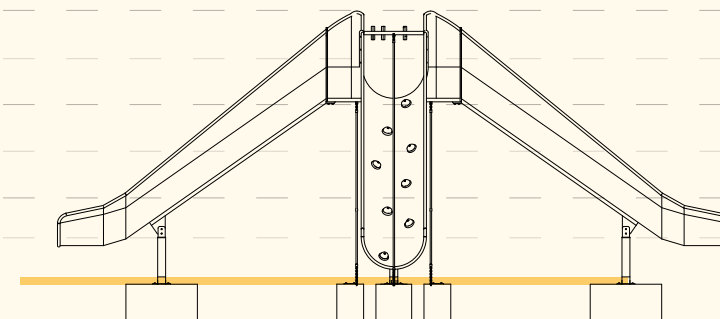
-Inground Installation -40cm



## Anchoring options:



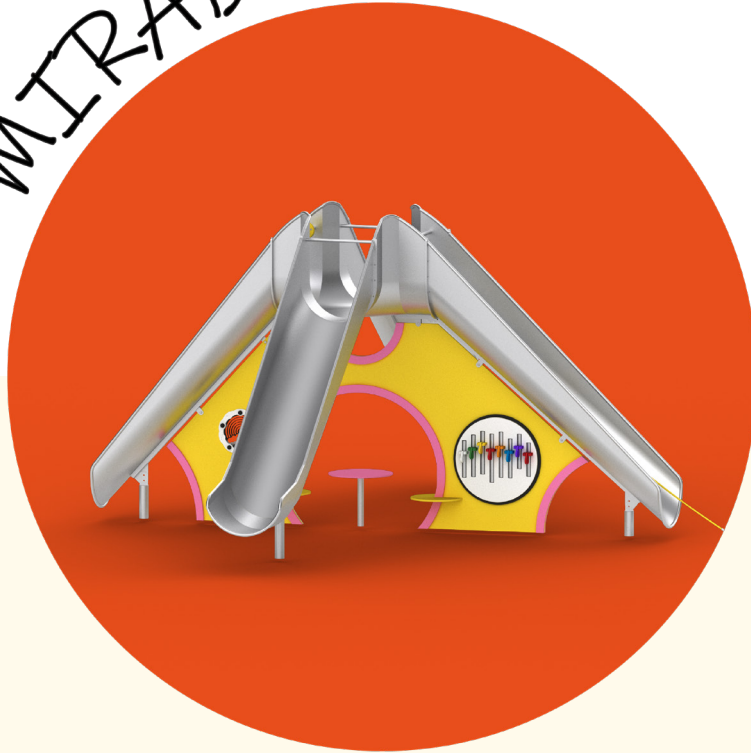
Inground Installation -40cm



Surface mount Installation -10cm



MIRABELLE





## HAPPY STRUCTURE - **MIRABELLE**

4 legs, 2m platform height

**MIRABELLE** doubles the excitement with two slides in one. It's not just a double slide, it's a playful hub full of surprises. At ground level, sound panels and interactive features invite curious hands. Kids can climb up in a variety of ways, choosing their own path to the top. At the center, a gathering table offers a spot to rest, create, or connect. The whole structure invites kids to explore, imagine, and play, with every step leading to the next fun moment.



# HAPPY STRUCTURE - MIRABELLE

4 legs, 2m platform height

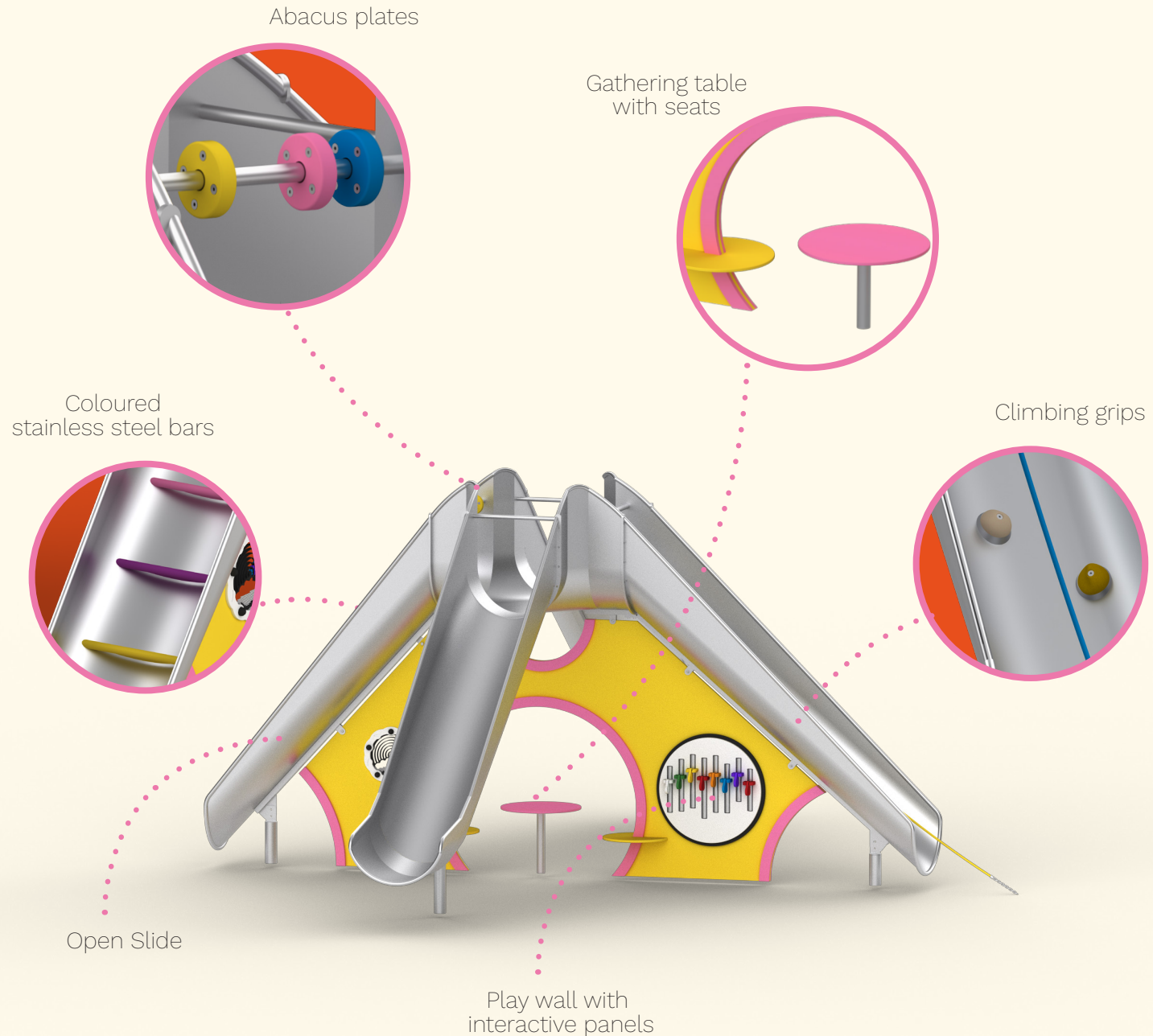
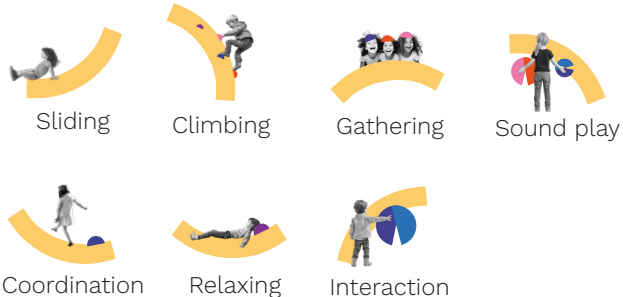
## Highlights:

- Dual Slides – *fast, fun, and safe*
- Climbing Rope & Grips – *build strength and balance*
- Windows & Rotating Plates – *spark curiosity and imagination*
- Abacus Plates – *play meets learning*
- Sound Panels – *create rhythms and explore music*
- Optical Illusion Panels – *captivate the senses and inspire imagination*
- Gathering Table – *inviting spot for social play*

## Product Information

|                     |                       |
|---------------------|-----------------------|
| Dimension L x W x H | 7.50m x 5.50m x 3.00m |
| Age group:          | 3-99 years            |
| Max falling height: | 2.00m                 |

## Play activities:



# HAPPY STRUCTURE - MIRABELLE

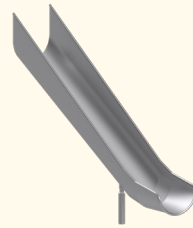
4 legs, 2m platform height

## Colour options available for:

Main slide structure: ✓

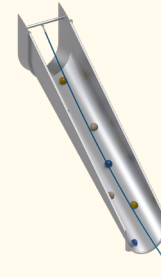
Climbing Grips: ✓

Abacus Plates: ✓



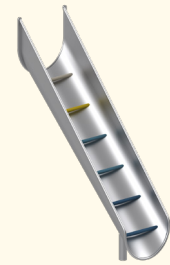
### 2x Open Slide

Two stainless steel slides starting from 2 m high offers an exciting descent that builds balance, spatial awareness, and core strength. Kids can race down using both slides.



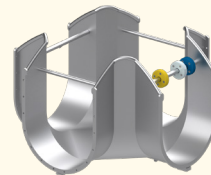
### Access Route with Grips & Rope

Equipped with climbing grips and reinforced rope, this access route develops strength, coordination, and problem-solving. Kids learn to navigate vertical movement while taking turns and supporting one another.



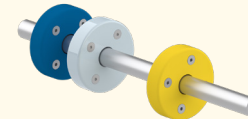
### Access Route with Steel Bars

Colorful stainless steel bars challenge children's balance, focus, and body control. The open design encourages anticipation and interaction, adding a social element to physical play.



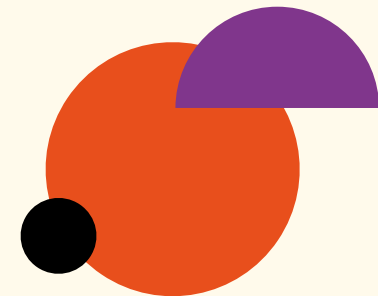
### Top Platform

This transition space connects climbing and sliding. Children pause here to observe, plan, and interact with others. It supports social play and decision-making before continuing the activity flow.



### Abacus Play

HDPE spinning panels on a horizontal bar allow kids to explore motion and patterns. The tactile experience supports motor skills and encourages collaborative or parallel play.



# HAPPY STRUCTURE - MIRABELLE

4 legs, 2m platform height

## Colour options available for:

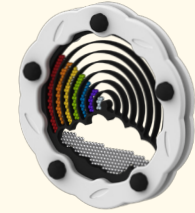
- Mini Spinning Spiral Optical Illusion Insert: ✓
- Mini Shaker insert: ✓
- Rainbow insert: ✓
- Wormhole Optical Illusion insert: ✓
- Diatonic Cam Chimes Musical insert ✓



**Mini Spinning Spiral Optical Illusion Insert**  
Fun and engaging optical illusion which demonstrates how the brain can be tricked.



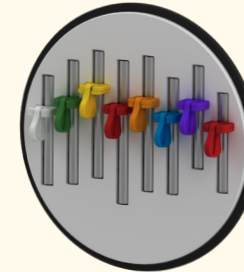
**Mini Shaker Insert**  
Turn the insert to see and hear hundreds of tiny balls tumble around.



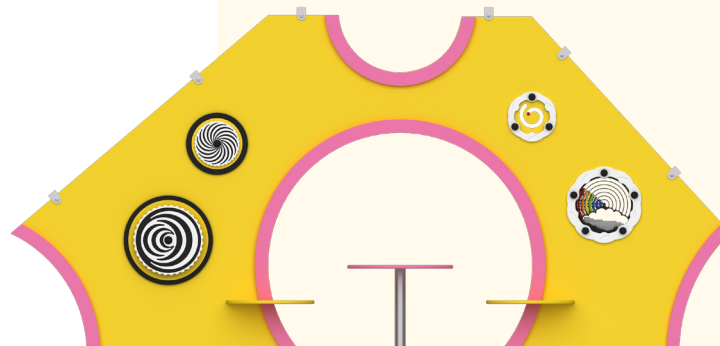
**Rainbow Insert**  
Rotate the drum and watch the coloured balls move around the rainbow.



**Wormhole Optical Illusion Insert**  
Rotate to see swirling patterns as this mind-bending optical illusion comes to life.



**Diatonic Cam Chimes Musical Insert**  
With 8 tube chimes C-C and custom-designed, free-swivelling cams that replace traditional beaters.



View of panel 1 front



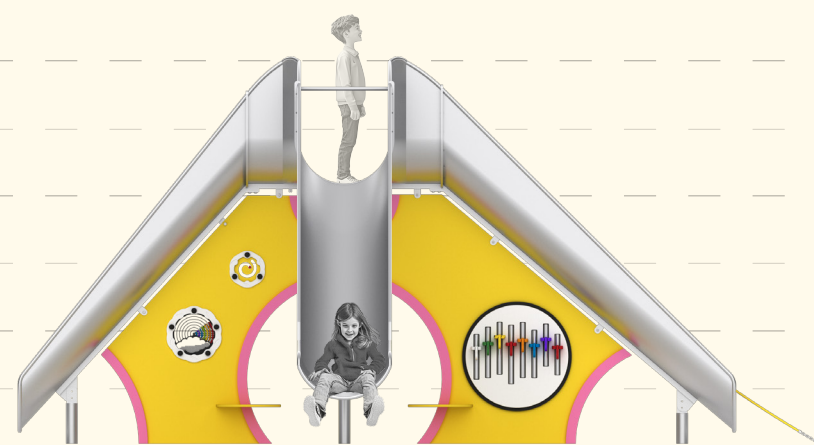
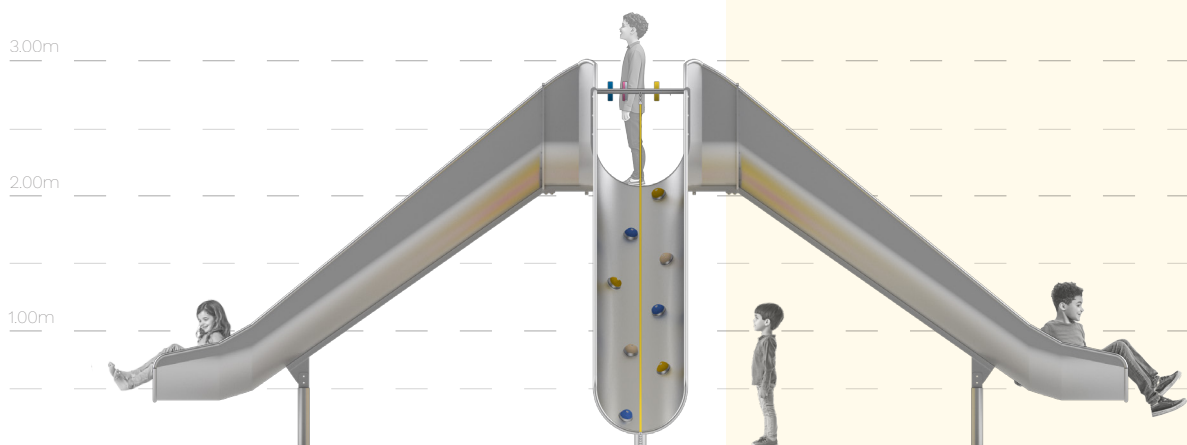
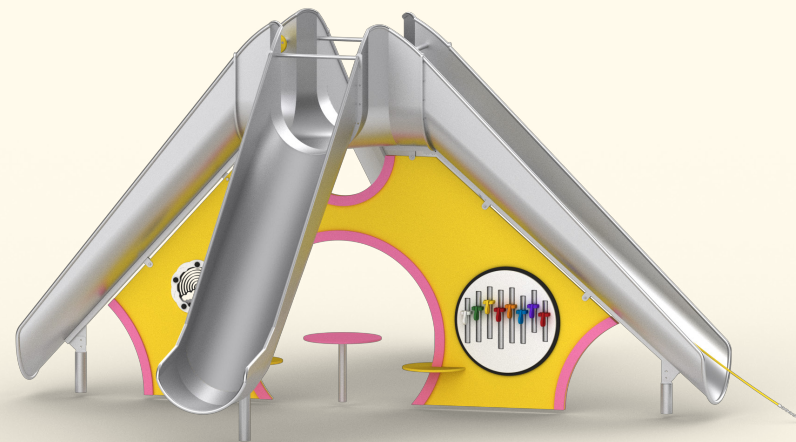
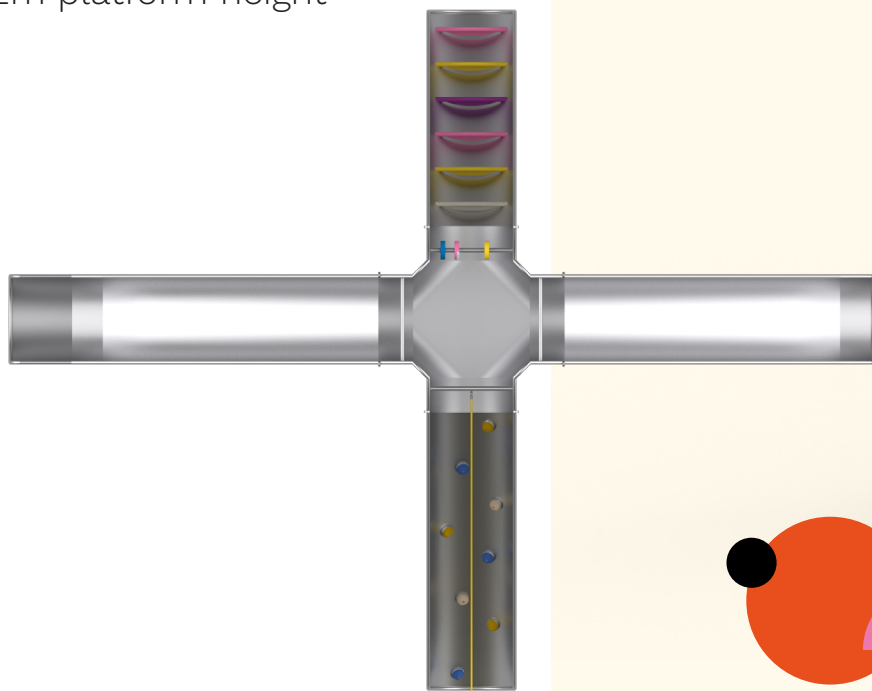
View of panel 1 back





# HAPPY STRUCTURE - MIRABELLE

4 legs, 2m platform height



# HAPPY STRUCTURE - MIRABELLE

4 legs, 2m platform height

## Installation information

Safety zone surfacing area: 11.50m x 9.15m

Concrete volume: 0.7 m<sup>3</sup>

Footing depth: 50cm/80cm

Shipment weight: TBD

Shipment box size: TBD

Lead time 6 weeks

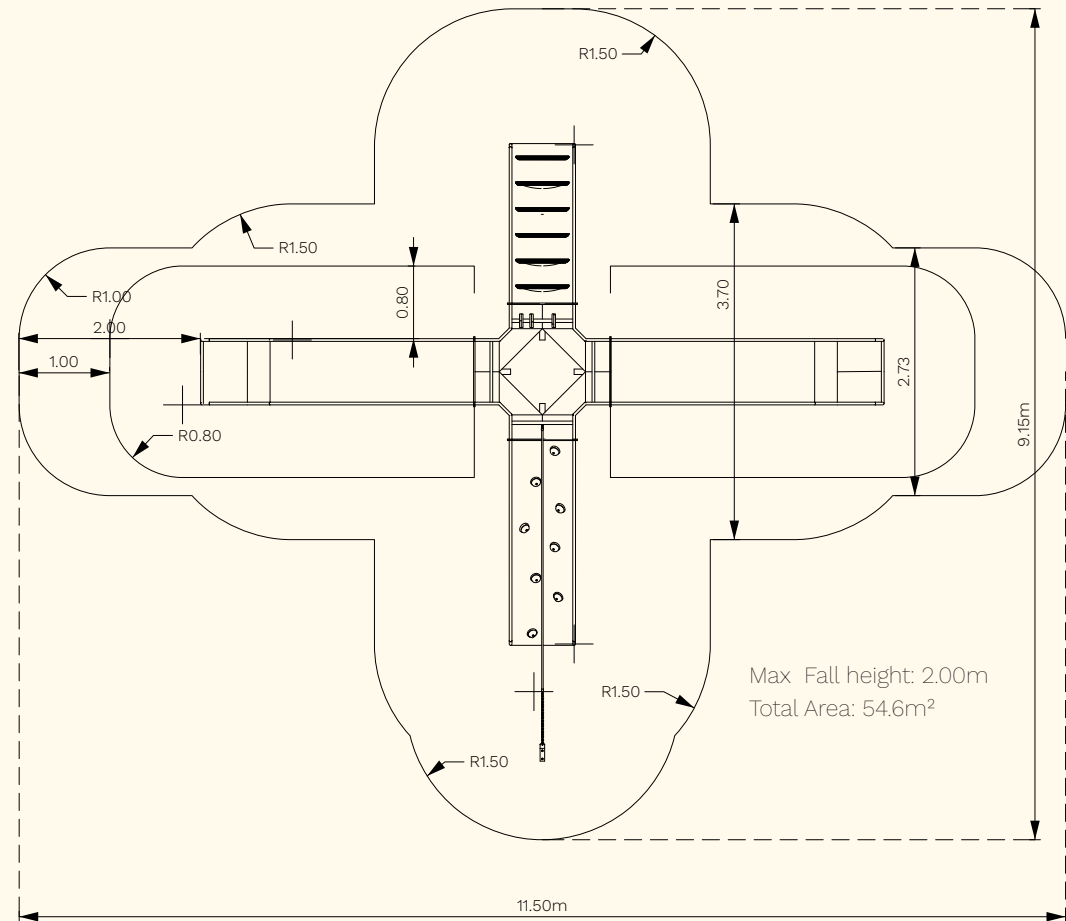
Warranty stainless steel parts 36 months

Warranty other parts 24 months

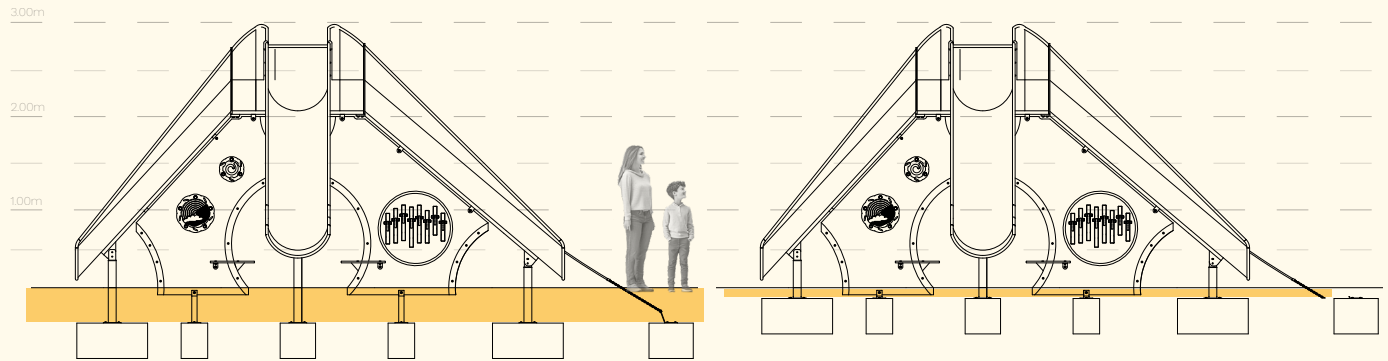
## Anchoring options:

-Surface mount Installation -10cm

-Inground Installation -40cm



## Anchoring options:

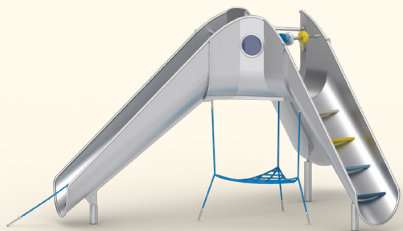


Inground Installation -40cm

Surface mount Installation -10cm



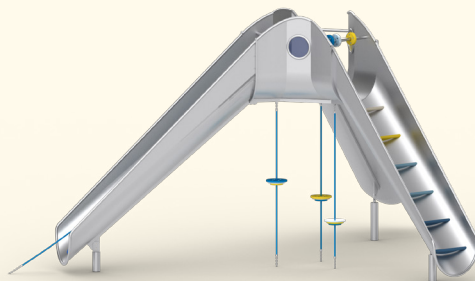




Product number: BA31530

## ELMA

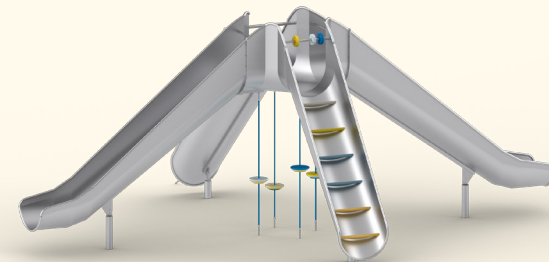
Platform height 1.50m



Product number: BA32010

## MORA

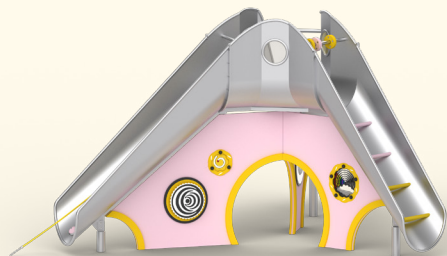
Platform height 2.00m



Product number: BA42010

## BERRY

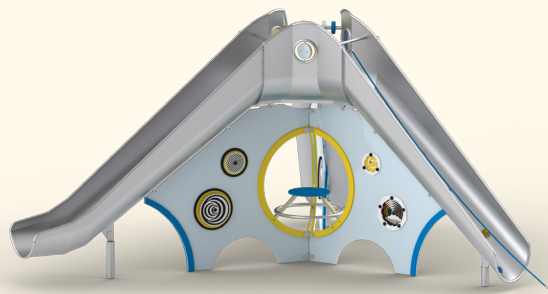
Platform height 2.00m



Product number: BA31520

## MOMO

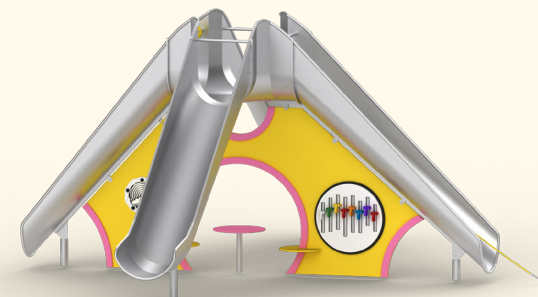
Platform height 1.50m



Product number: BA32020

## MALINA

Platform height 2.00m



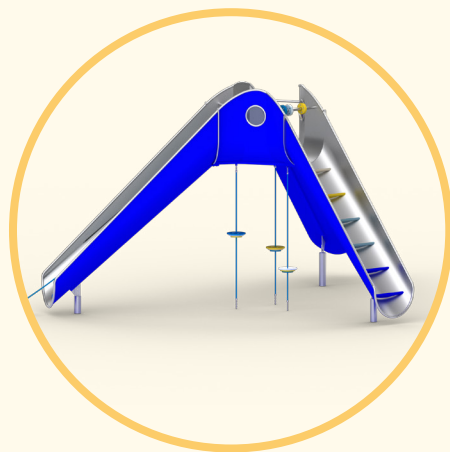
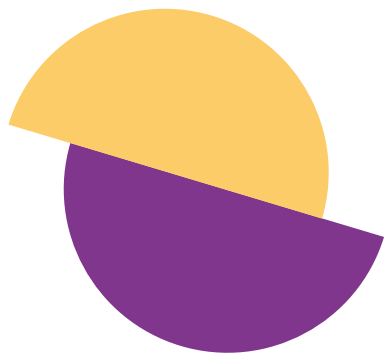
Product number: BA42020

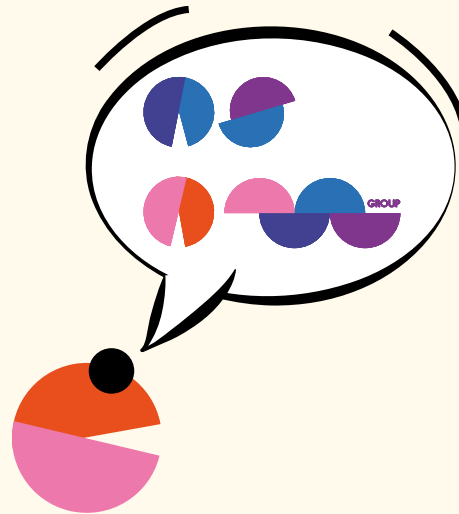
## MIRABELLE

Platform height 2.00m

## HAPPY STRUCTURES - COLOURS

Slides available in any RAL colour,  
examples shown as inspiration.





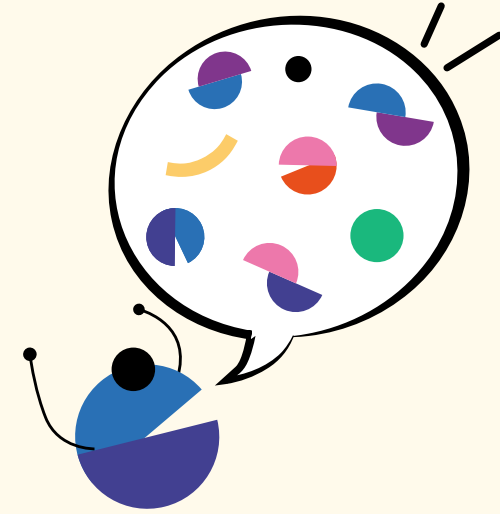
**OSOM GROUP** specializes in high-quality stainless steel slides, built with precision, durability, and safety in mind. With expert manufacturing and a strong focus on comfort and design, OSOM creates slides that are made to perform in public spaces and built to last.

[www.osomgroup.eu](http://www.osomgroup.eu)



**BANANAZ STUDIO** creates bold, imaginative play spaces that go beyond the ordinary. With years of experience and a passion for innovation, BANANAZ designs compact, creative structures that turn any space into a playground full of stories, movement, and interaction.

[www.bananaz-studio.com](http://www.bananaz-studio.com)



This collaboration brings together BANANAZ's playful design vision and OSOM's engineering excellence. Together, we create slides that do more: climbable, social, sculptural play objects that are made to last and made to spark joy.

[www.happystructures.com](http://www.happystructures.com)



[www.happystructures.com](http://www.happystructures.com)



[contact@osomgroup.eu](mailto:contact@osomgroup.eu)



[info@bananaz-studio.com](mailto:info@bananaz-studio.com)

SLIDE  
YOUR WAY



# HAPPY STRUCTURES



**Banamaz**  
STUDIO